

July 2009

# Trail Development Standards

Draft Copy



Riverside County Regional  
Park and Open-Space District



4600 Crestmore Road  
Riverside, CA 92509  
951.955.4300  
[www.riversidecountyparks.org](http://www.riversidecountyparks.org)

Scott Bangle  
General Manager

# Table of Contents

## Introduction and Purpose

## Trail Definitions and Standards

### Class I Bikeway

#### Combination Trail: Class I Bikeway/Regional Trail

Urban and Rural

### Regional Trail

Urban and Rural

Open-Space

### Community Trail

Non-CSA or Non-Local Park District Jurisdiction

General Trail Standards

## Typical Trail Sections

Class I Bikeway                      Parks Trail Detail 1001

### Combination: Class I Bikeway/Regional Trail

Urban                                  Parks Trail Detail 2001

Rural                                   Parks Trail Detail 2002

Hill Slope Trail                      Parks Trail Detail 2004

### Regional Trail

Urban                                  Parks Trail Detail 3001

Rural                                   Parks Trail Detail 3002

Open-Space Area                      Parks Trail Detail 3003

### Community Trail

Non-CSA or Non-Local Park District

District Jurisdiction                      Parks Trail Detail 4001

## Trail Details

Fencing                      Vinyl Post and Rail

Fencing                      Wooden Round Post and Rail

Bollard                      Bollard Replacement Detail

Equestrian                      Step Over Detail

Equestrian                      Hitching Rail Detail



## Table of Contents (continued)

### Trail Project Conditions of Approval

#### **PAR Regional Trail**

Community Trail:

CSA or Local Park District Jurisdiction

Community Trail:

Non-CSA or Non-Local Park District Jurisdiction

#### **DRT Correction Condition**

Regional Trail

Community Trail:

CSA or Local Park District Jurisdiction

Community Trail:

Non-CSA or Non-Local Park District Jurisdiction

#### **Prior to Project Approvals**

#### **Prior to Map Recordation**

#### **Trail Maintenance Condition**

Regional Trail

Community Trail:

CSA or Local Park District Jurisdiction

Community Trail:

Non-CSA or Non-Local Park District  
Jurisdiction

Prior to Issuance of Grading Permits

Prior to Final Grading Inspection

Prior to Issuance of Building Permit

Prior to Issuance of Occupancy Permit

### **County Wide Trail Maps:**

On Attached Disc listed per Area Plan as listed below:

1. Jurupa
2. EastVale
3. Temescal Canyon
4. Elsinore
5. Lake Mathews / Woodcrest
6. Highgrove
7. March
8. Mead Valley
9. Sun City / Meniffee
10. Southwest Area
11. Reche Canyon / Badlands
12. Lakeview / Nuevo
13. Harvest Valley
14. The Pass
15. San Jacinto Valley
16. REMAP
17. Western Coachella Valley
18. Eastern Coachella
19. Desert Center
20. Palo Verde Valley
21. East County-Desert Area



# **Introduction and Purpose**

# Introduction

The purpose of these standards is to clearly describe graphically and in text the key elements for the design and development of trails throughout Eastern and Western Riverside County. As the County continues to grow and develop Quality of Life issues are becoming more important. The concept of the livable community and the role trails can play in accomplishing that goal is also becoming important. Without clear direction from the County the development community has no realistic way to provide trails that can serve as alternate transportation routes or as a network providing family oriented leisure recreation opportunities.

Although the information provided is specific, it is not intended to remove or eliminate creative design solutions for each community. By providing examples and acceptable standards this document can serve as a practical reference for the County of Riverside, designers, engineers, land developers and residents. It is anticipated that the majority of the trail elements defined in this document will be added incrementally as part of new development and as funding opportunities for the County become available. As the County's trails system continues to develop the provision for its maintenance must also be made either as part of the development projects or as part of existing and/or new maintenance assessment districts.





# **Trails Definitions and Standards**

# Bike

## Class 1 Bikeway



**Definition:** A 10 foot – 12 foot wide paved surface consisting of two equal width striped lanes completely separate from roadways and Multi-purpose soft surface trails. It is designed as an alternate urban commuter route connecting urban areas and regional park facilities and for the exclusive use by bicycles and pedestrians.

**Location:** Usually adjacent to roadways, located adjacent to or immediately outside of the ultimate road "right of way."

**Typical Easement:** 20 foot min. – 30 foot max. (Width of easement can be negotiated with the District and approval from TLMA Transportation)

**Maintenance Entity:** Riverside County Regional Park and Open-Space District or another agency based on a negotiated agreement and letter of acceptance.

### General Paving Standards:

**District Standard:** Parks 1001

**Wear Surface:** Rubberized Asphalt: 4 inch thickness  
(Material type negotiable with approval from the District and TLMA Transportation)

**Base Course:** Class II Base Material: Width of trail + 0.5 feet each side of trail, 6 inch thickness; Rolled, watered and compacted.

**Sub-Grade:** Native material prepared and compacted to 95%.

See additional information 'General Trail Standards' at the end of this section.



# Combination Class 1 Bikeway/Regional Trail

## Bike

**Definition:** A 10 foot - 12 foot wide paved surface consisting for two striped lanes of equal width and a 10 foot – 12 foot wide Multi-purpose stabilized soft surface trail completely separate from roadways. It is designed as an alternate urban commuter route connecting urban areas and regional park facilities. The pave trail is for exclusive use by bicycles and pedestrians. The Multi-purpose trail is for all users including equestrians.

**Location:** Usually adjacent to roadways, but located adjacent to or immediately outside of the ultimate road right of way.

**Typical Easement:** 30 foot min. - 40 foot max. easement typical on one side of roadway. The trails can be split to place one trail of each type on opposite sides of the roadway with easement width being reduced by approximately half per each side. Width of easements can be negotiated with the District and approval from TLMA Transportation entity.

**Maintenance Entity:** Riverside County Regional Park and Open-space District or another agency based on a negotiated agreement

### General Bikeway Paving Standards:

**District Standard:** Parks 2001 - Urban  
Parks 2002 - Rural

**Wear Surface: Rubberized Asphalt:** 4 inch thickness  
(Material type negotiable with approval from the District and maintenance entity)





# Bike

## Combination Class 1 Bikeway/Regional Trail (Continued)



**Base Course:** Class II Base Material: Width of trail + 0.5 feet each side of trail, 6 inch thickness; Rolled, watered and compacted.

**Sub-Grade:** Native material prepared and compacted to 95%.

### General Regional Trail Paving Standards:

**District Standard:** Parks 2001 - Urban  
Parks 2002 - Rural  
Parks 2004 - Slope



**Wear Surface:** Stabilized Decomposed Granite (DG): 4 inches – 6 inches of thickness (negotiable with approval from the District and maintenance entity)

**Stabilization Material:** A polymer or resin stabilizing compound applied to the D.G. per manufacturer's instructions. Examples are Poly-paver, Gill materials or equal.

**Base Course:** Class II Base Material: Surface width of trail + 0.5 feet each side of trail, 4 inch thickness; Rolled, watered and compacted. 6 inch thickness required in areas of shallow water table or determined to have water see page.

**Sub-Grade:** Native material prepared, compacted to 95% and treated with a pre-emergent herbicide.

**Urban Edging:** 6" x 6" concrete header with smooth trowel finish.

**Rural Edging:** 2" x 4" synthetic material header with staking. Stakes 1" x 2" x 12" to be placed 4'- 0" o.c.



See additional information 'General Trail Standards' at the end of this section.

# Regional

## Regional Trail (Urban and Rural)



**Definition:** A 10 foot – 12 foot wide stabilized Multi-purpose trail. It is designed as an alternate route for pedestrian, jogger, walker, hiker and equestrian use. It is designed to serve as major linkages that interconnect Regional Parks, Open-space Areas, communities and cities.

**Location:** Usually along the fringe of development projects; roadways, (adjacent to or immediately outside of the ultimate road right of way) and may follow streams or watercourses with approval from the appropriate review agencies.

**Typical Easement:** 20' (can be negotiated with the District and approval from TLMA Transportation)

**Maintenance Entity:** Riverside County Regional Park and Open-Space District or TLMA Transportation L&LMD entity

**General Paving Standards:**

**District Standard:** Parks 3001 - Urban  
Parks 3002 - Rural

**Wear Surface:** Stabilized Decomposed Granite (DG): 4 inches – 6 inches thick (negotiable with approval from the District and TLMA Transportation L& LMD entity)

**Stabilization Material:** A polymer or resin stabilizing compound applied to the D.G. per manufacturer's instructions. Examples are Poly-paver, Gill materials or equal.

**Base Course:** Class II Base Material: Surface width of trail + 0.5' each side of trail, 4 inches of thickness; rolled, watered and compacted. 6 inches required in areas of shallow water table or determined to have water seepage.



# Regional Trail (Continued)

**Sub-Grade:** Native material prepared, compacted to 95% and treated with a pre-emergent herbicide.

**Urban Edging:** 6" x 6" concrete header (mow strip) with #4 rebars centered, trowel smooth finish

**Rural Edging:** 2' x 4" synthetic material header with staking.  
Stakes 1" x 2" x 12" to be placed 4'-0" o.c.

See additional information 'General Trail Standards' at the end of this section.

# Regional



# Open-Space

## Regional Trail Open -Space Area



**Definition:** A 24 inch – 48 inch wide earthen path (usually pre-existing) within open-space areas as part of a development project or unincorporated areas of the County. It is designed for hiker, jogger, walker, equestrian and mountain bike use. The trails can have connections to regional or community trail systems but also be a stand alone trail system.

**Location:** Usually within the boundary of a large open-space area as part of a development project that is being offered to the County as open-space. Trails may be pre-existing or proposed. The trails may follow streams or watercourses with approvals from the appropriate review agencies.

**Typical Easement:** 6 feet -10 feet (easement width can be negotiated with the District and approval of other indentified maintenance entity)

**Maintenance Entity:** Riverside County Regional Park and Open-Space District, TLMA Transportation (roadways only) entity can be established.

**General Paving Standards:**

**District Standard:** Parks 3003:

**Wear Surface:** Cleared native earthen material

**Stabilization Material:** N/A

**Base Course:** N/A.

**Sub-Grade:** N/A

See additional information 'General Standards' for all trails at the end of this section.



# Community Trail

## Non-CSA or Non-Local

### Park District

### Jurisdiction

## Community

**Definition:** An 8 foot -10 foot wide Multi-purpose soft surface trail. It is designed to provide pedestrians, joggers, walkers, hikers, and equestrians access within a community, access to community facilities such as neighborhood and community parks as well as safe paths of travel to the Regional Trail system.

**Location:** Usually along the fringe or throughout development projects; roadways, adjacent to or within the ultimate road right of way, along streams or watercourses and throughout developments.

**Typical Easement:** 14' (can be negotiated with the District and approval from TLMA Transportation or other indentified maintenance entity)

**Maintenance Entity:** Riverside County Regional Park and Open-space District or TLMA Transportation (roadways only), temporarily, until a local entity can be established or trail maintenance.



Community

# Community Trail Non-CSA or Non-Local Park District Jurisdiction Trail



## General Paving Standards:

District Standard: Parks 4001:

**Wear Surface:** Stabilized Decomposed Granite (DG): 4 inches – 6 inches of thickness (negotiable with approval from the District and TLMA Transportation or other maintenance entity)

**Stabilization Material:** A polymer or resin stabilizing compound applied to the D.G. per manufacturer's instructions. Examples are Poly-paver, Gill materials or equal.

**Base Course:** Class II Base Material: Surface width of trail + 0.5 feet each side of trail, 4 inches of thickness; rolled, watered and compacted. 6 inches of thickness required in areas of shallow water table or determined to have water seepage

**Sub-Grade:** Native material prepared, compacted to 95% and treated with a pre-emergent herbicide.

See additional information 'General Trail Standards' at the end of this section.

# Trail Design Standards

## Design

### General Standards

#### Curb Cuts and Ramps

For all Trail Crossings: Shall meet Caltrans Standards and surfacing requirements

Material: 2,500 PSI Concrete

Thickness: 6 inches thick

#### Trail Cross Slopes:

Surface: A cross slope is preferred over crowning of trail surfaces.

Recommended Slope: 1% - 1.5%

Maximum Slope: 2%

Longitudinal Grades: Shall comply with ADA standards.

Preferred Maximum: 5%

#### Shoulders Adjacent to Trails:

Shoulder: Graded areas to be free of hazards adjacent to both sides of the trail.

Preferred Width: 3'-0"

Minimum Width 2'-0"

Cross Slope Min.: 1.0%

Cross Slope Max.: 2.0%



# Design

## Trail Design Standards (continued)



### Design Speed:

Paved: 20 mph  
Unpaved: 10-15 mph

### Clearances:

#### Vertical Obstructions:

Pedestrian Use: 8'- 0"  
Bicycle Use: 10'- 0"  
Equestrian Use: 12'- 0"

#### Horizontal Obstructions:

Lateral Clearance w/o barrier 4'-0" Desired  
(trees, poles, walls, etc)

Lateral Clearance w/ barrier: Negotiable

Distance to Roadway: Will vary. All trails to be set outside of ultimate road "Right of Way"



Lateral Clearance to Grade Change w/o barrier Distance will vary depending on grade.







# Typical Trail Sections

### CLASS I BIKEWAYS

PROVIDE A COMPLETELY SEPARATED RIGHT OF WAY FOR THE EXCLUSIVE USE OF BICYCLES AND PEDESTRIANS WITH CROSSFLOW BY MOTORISTS MINIMIZED. SIDEWALK FACILITIES ARE NOT CONSIDERED CLASS I FACILITIES BECAUSE THEY ARE PRIMARILY INTENDED TO SERVE PEDESTRIANS. GENERALLY CANNOT MEET THE DESIGN STANDARDS FOR THE CLASS I BIKEWAY, AND DO NOT MINIMIZE MOTORIST CROSS FLOWS.

CLASS I BIKEWAYS SHOULD OFFER OPPORTUNITIES NOT PROVIDED BY THE ROAD SYSTEM. THEY CAN EITHER PROVIDE A RECREATIONAL OPPORTUNITY OR SERVE AS A HIGH-SPEED DIRECT COMMUTE ROUTE IF CROSS FLOW BY MOTOR VEHICLES CAN BE MINIMIZED. THE MOST COMMON APPLICATIONS ARE ALONG RIVERS, CANALS, UTILITY RIGHT OF WAY, ABANDONED RAILROAD RIGHT OF WAY, WITHIN COLLEGE CAMPUSES, OR WITHIN AND BETWEEN PARKS. CLASS I BIKEWAYS CAN SERVE TO CLOSE GAPS TO BICYCLE TRAVEL CAUSED BY CONSTRUCTION OF FREEWAYS, OR BECAUSE OF THE EXISTENCE OF NATURAL BARRIERS (RIVERS, MOUNTAINS, ETC.)

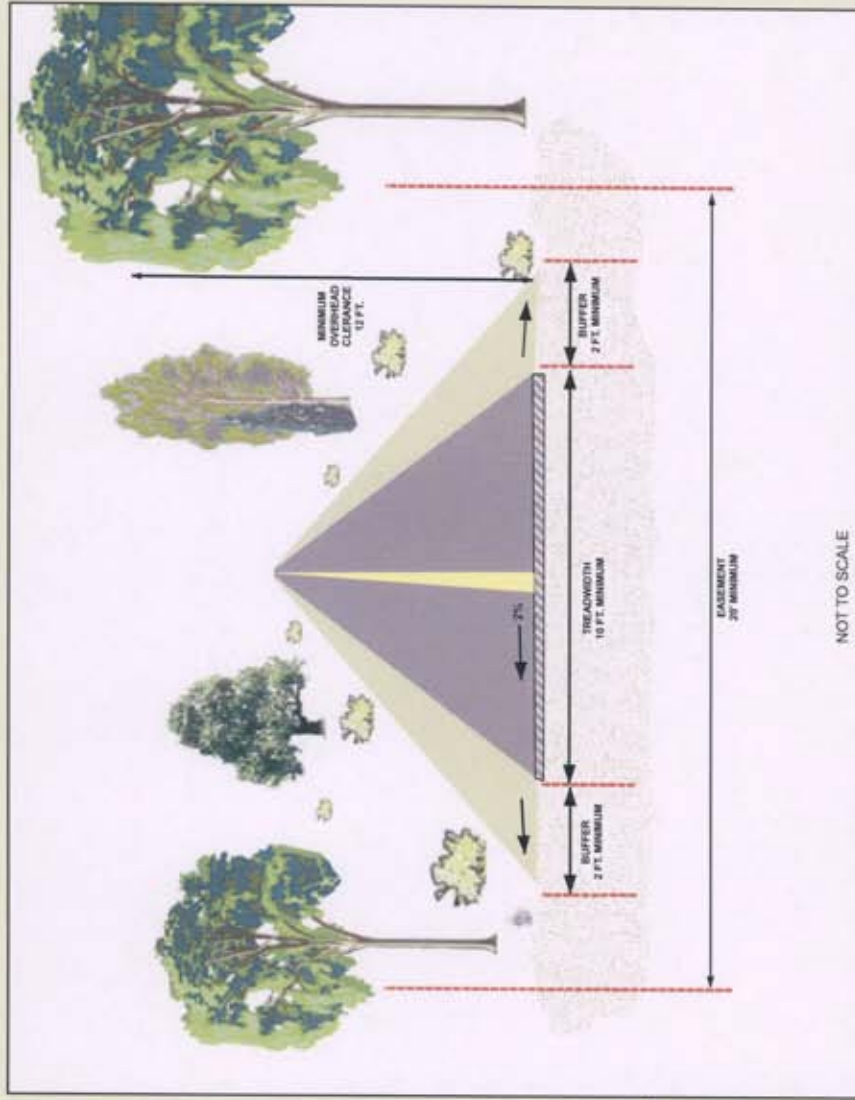
THE CLASS I BIKEWAY STANDARDS RECOGNIZED BY THE COUNTY OF RIVERSIDE ARE THOSE DESCRIBED IN THE CALTRANS HIGHWAY DESIGN MANUAL, CHAPTER 1000, BIKEWAY PLANNING AND DESIGN.

### SIGNS

FOR APPLICATION AND PLACEMENT OF SIGNS, SEE THE MANUAL ON UNIFORM CONTROL DEVICES (MUTCD), SECTION 9B.01 AND THE CALIFORNIA SUPPLEMENT SECTION 9B-101.

### PAVEMENT MARKINGS

FOR PAVEMENT MARKING GUIDANCE, SEE THE MUTCD, SECTION 9C.03.



Riverside County Regional Park  
& Open Space District  
Parks Planning Division  
October 2008

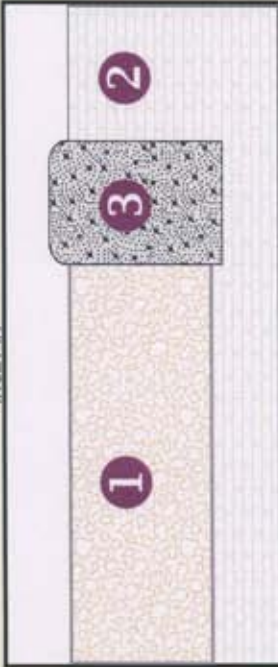


## CLASS I BIKEWAY

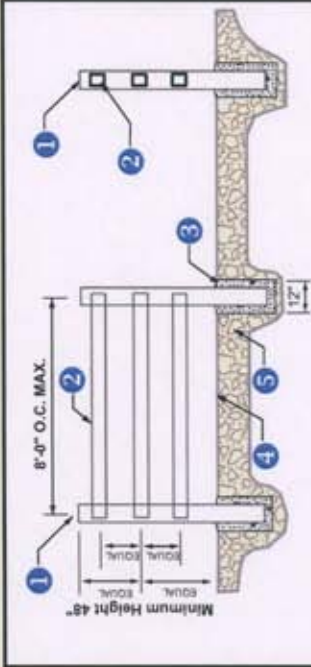
Trail Detail: PARKS - 1001

**NOTE:**  
All irrigation piping and wires routed under D.G. trails and concrete headers shall be installed inside SCH. 40 sleeves as if under paving.

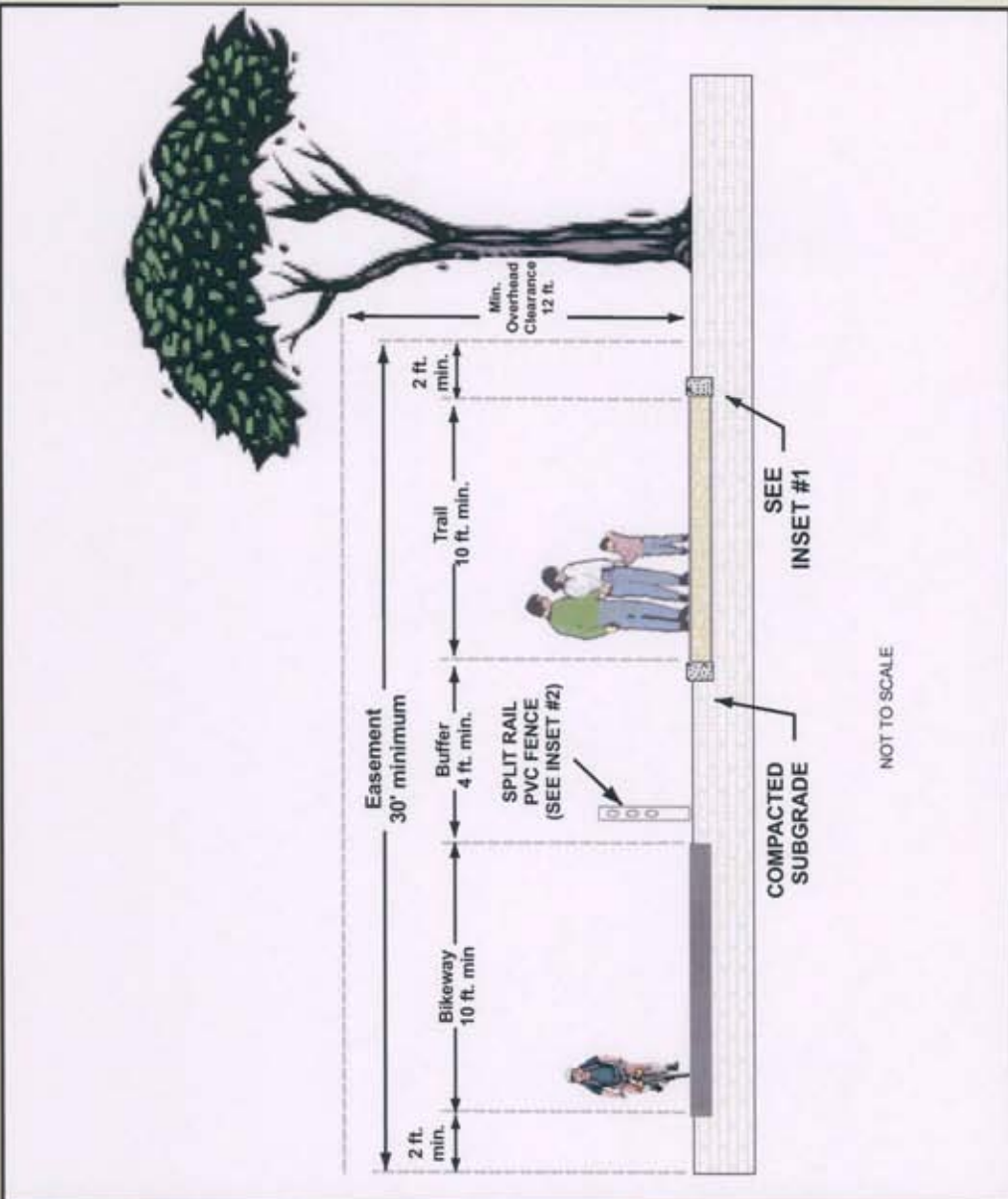
INSET #1



- 1** -MINIMUM 6" THICK LAYER OF DECOMPOSED GRANITE.  
-INSTALL THREE EQUAL 2" DEEP LIFTS.  
-WATER IN AND COMPACT EACH LIFT PER "STABILIZER" SPECIFICATIONS.
- 2** -COMPACTED PER SOIL ENGINEER'S REPORT.  
-STERILIZE SOIL UNDER TRAIL SECTION AS REQUIRED.
- 3** -NATURAL 6" X 6" GRAY CONCRETE HEADER WITH SMOOTH TROWEL FINISH  
-1" RADIUS EDGE  
-FINISHED GRADE OF D.G. TRAIL 1" BELOW TOP OF HEADER  
-#3 REBAR CONTINUOUS ENTIRE LENGTH OF HEADER



- 1** 5" DIA. PVC POST WITH CAP @ 8'-0" O.C. MAX. EMBED INTO FOOTING 2' MIN.
- 2** 3" DIA. PVC RAILS ATTACHED TO POST.
- 3** 12" DIA. 28" DEEP CONCRETE FOOTING.
- 4** FINISH GRADE.
- 5** COMPACTED SUBGRADE PER SOIL ENGINEER'S REPORT



For Bikeway specifications refer to:

Trail Detail - PARK-1001 (CLASS I BIKEWAY)

Riverside County Regional Park  
& Open Space District  
Parks Planning Division  
December 2005

## CLASS I BIKEWAY/REGIONAL TRAIL IN URBAN AREAS



Trail Detail: PARKS-2001

NOTE: All irrigation piping and wires routed under D.G. trails and concrete headers shall be installed inside SCH. 40 sleeves as if under paving.

INSET #1



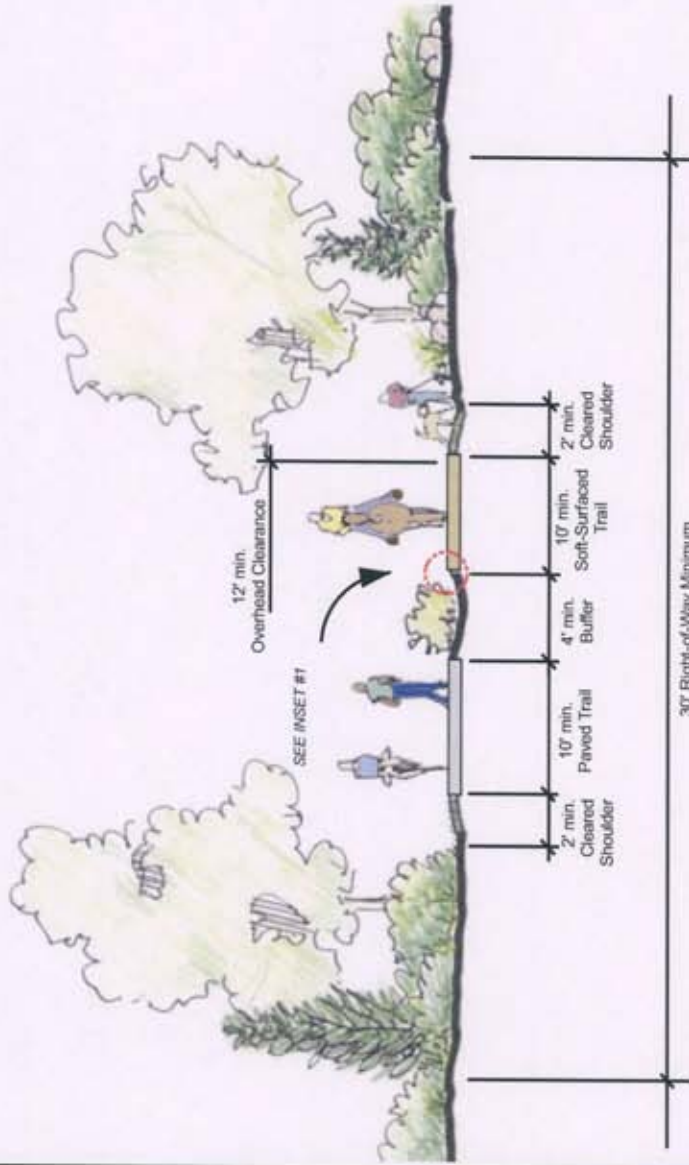
- 1 -MINIMUM 6" THICK LAYER OF DECOMPOSED GRANITE.  
-INSTALL THREE EQUAL 2" DEEP LIFTS.  
-WATER IN AND COMPACT EACH LIFT PER 'STABILIZER' SPECIFICATIONS.
- 2 -COMPACTED PER SOIL ENGINEER'S REPORT.  
-STERILIZE SOIL UNDER TRAIL SECTION AS REQUIRED.
- 3 -2"X2"X18" TREX, OR EQUIVALENT, STAKE.  
TOP FLUSH WITH HEADER.
- 4 -2"X4" TREX, OR EQUIVALENT, HEADER.

STAKES SHALL BE INSTALLED A MINIMUM OF FIVE (5) FEET ON CENTER ALONG THE ENTIRE LENGTH OF HEADER AND AT ALL ENDS OF BAORDS.

ALL IRRIGATION PIPING AND WIRES ROUTED UNDER D.G. PATHS SHALL BE INSTALLED INSIDE SCH. 40 SLEEVES AS IF UNDER PAVING.

For Bikeway specifications see:

Trail Detail - PARK-1001 (CLASS I BIKEWAY)



30' Right-of-Way Minimum

NOT TO SCALE

Riverside County Regional Park  
& Open Space District  
Parks Planning Division  
December 2005

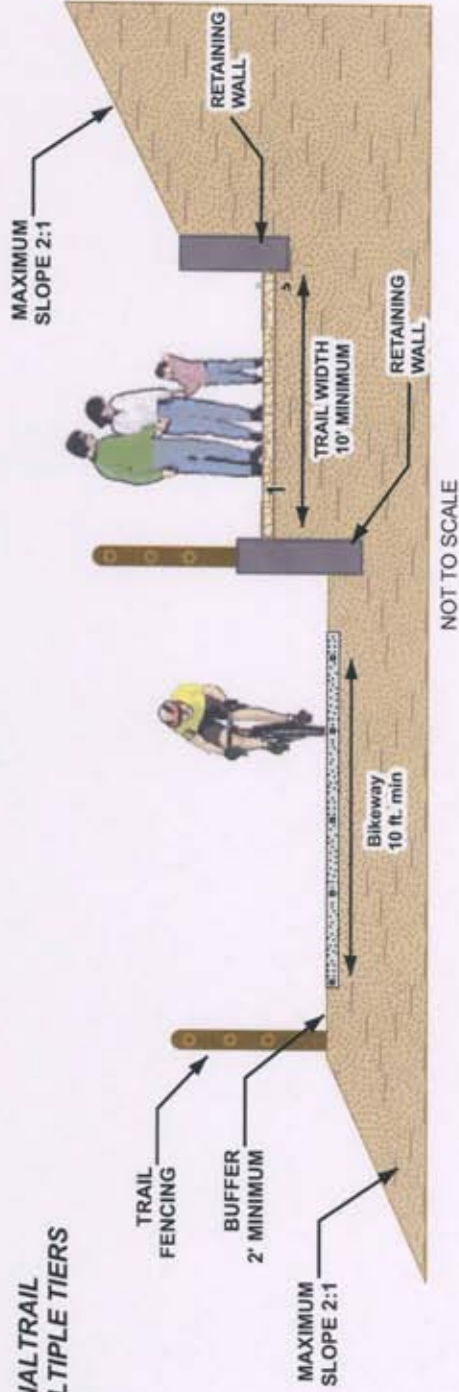
## CLASS I BIKEWAY/REGIONAL TRAIL IN RURAL AREAS

### Trail Detail: PARKS-2002

**NOTE:**

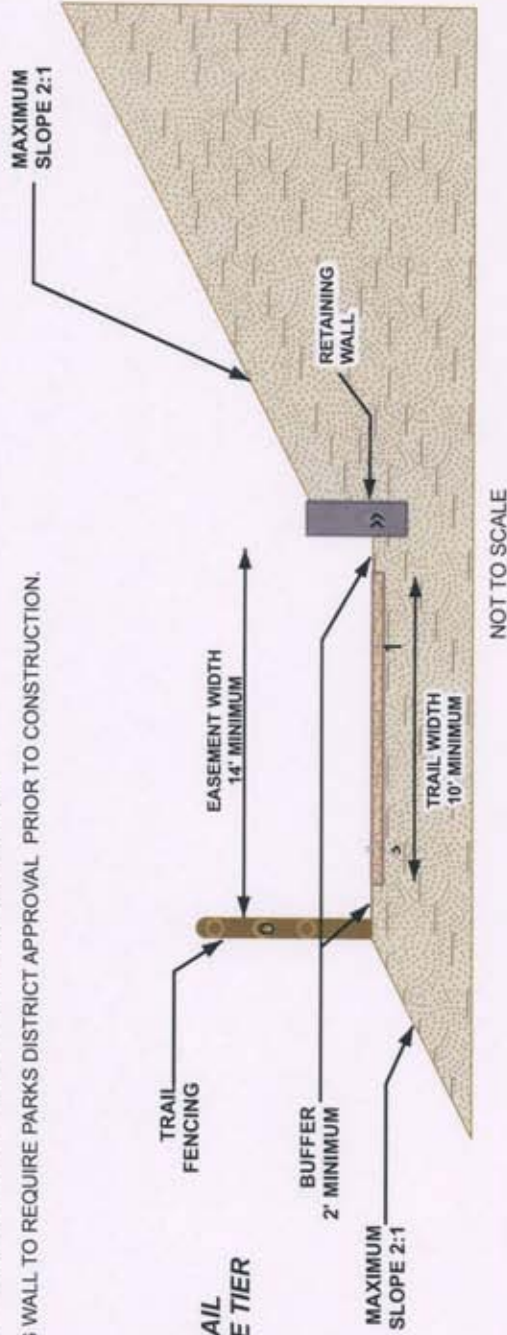
All irrigation piping and wires routed under D.G. trails and concrete headers shall be installed inside SCH. 40 sleeves as if under paving.

**CLASS I BIKEWAY/REGIONAL TRAIL  
ON A CROSS SLOPE WITH MULTIPLE TIERS**



- MINIMUM 6" THICK LAYER OF DECOMPOSED GRANITE. INSTALL IN THREE EQUAL 2" LIFTS, WATER IN
- » AND COMPACT EACH LIFT PER 'STABILIZER' SPECIFICATIONS.
- 1 COMPACTED PER SOIL ENGINEER'S REPORT. STERILIZE SOIL UNDER TRAIL SECTION AS REQUIRED.
- 0 FENCING TO COMPLY WITH EXISTING PARK DISTRICT STANDARDS.
- » RETAINING WALL TO REQUIRE PARKS DISTRICT APPROVAL PRIOR TO CONSTRUCTION.

**CLASS I BIKEWAY/REGIONAL TRAIL  
ON A CROSS SLOPE WITH A SINGLE TIER**



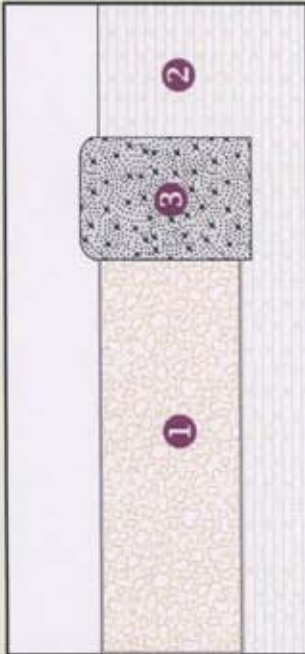
Riverside County Regional Park  
& Open-Space District  
Parks Planning Division  
October 2008

**CLASS I BIKEWAY/REGIONAL TRAIL  
ON A CROSS SLOPE OR HILLSIDE**



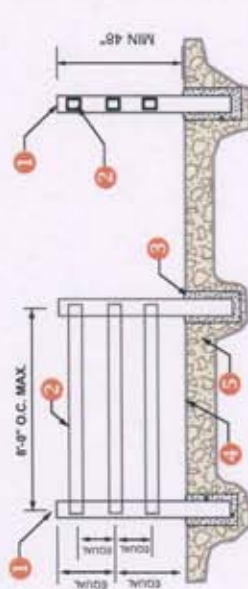
Trail Detail: PARKS-2004  
Drawn By: Park Planner  
Checked By: Senior Park Planner  
Date: July 2009

INSET #1

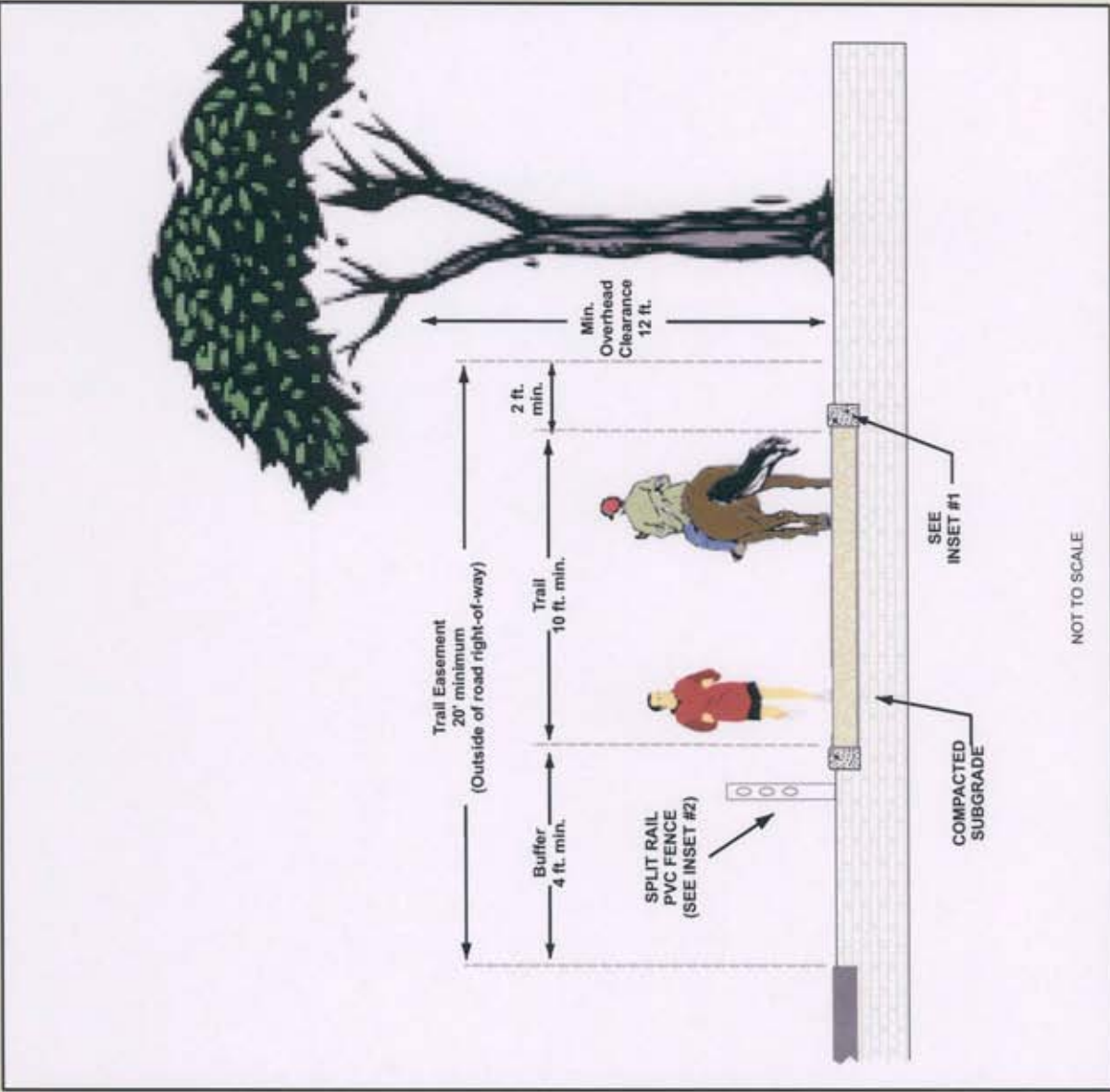


- 1 MINIMUM 6" THICK LAYER OF DECOMPOSED GRANITE.
- 2 INSTALL THREE EQUAL 2" DEEP LIFTS.
- 3 WATER IN AND COMPACT EACH LIFT PER 'STABILIZER' SPECIFICATIONS.
- 4 STERILIZE SOIL UNDER TRAIL SECTION AS REQUIRED.
- 5 COMPACTED PER SOIL ENGINEER'S REPORT.
- 6 NATURAL 8" X 6" GRAY CONCRETE HEADER WITH SMOOTH TROWEL FINISH.
- 7 1" RADIUS EDGE
- 8 FINISHED GRADE OF D.G. TRAIL, 1" BELOW TOP OF HEADER.
- 9 #3 REBAR CONTINUOUS ENTIRE LENGTH OF HEADER.

INSET #2



- 1 5" DIA. PVC POST WITH CAP @ 8'-0" O.C. MAX. EMBED INTO FOOTING 2' MIN.
- 2 3" DIA. PVC RAILS ATTACHED TO POST.
- 3 12" DIA. 28" DEEP CONCRETE FOOTING.
- 4 FINISH GRADE.
- 5 COMPACTED SUBGRADE PER SOIL ENGINEERS REPORT



NOT TO SCALE



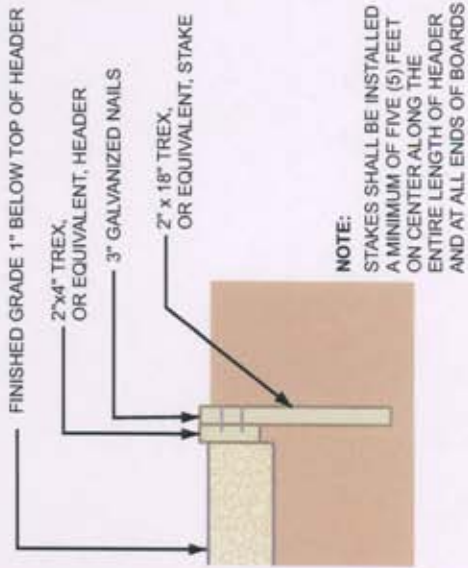
Trail Detail: **PARKS - 3001**

**NOTE:**  
All irrigation piping and wires routed under D.G. trails and concrete headers shall be installed inside SCH. 40 sleeves as if under paving.

# REGIONAL TRAIL IN URBAN AREAS

Riverside County Regional Park  
& Open Space District  
Parks Planning Division  
July 2009

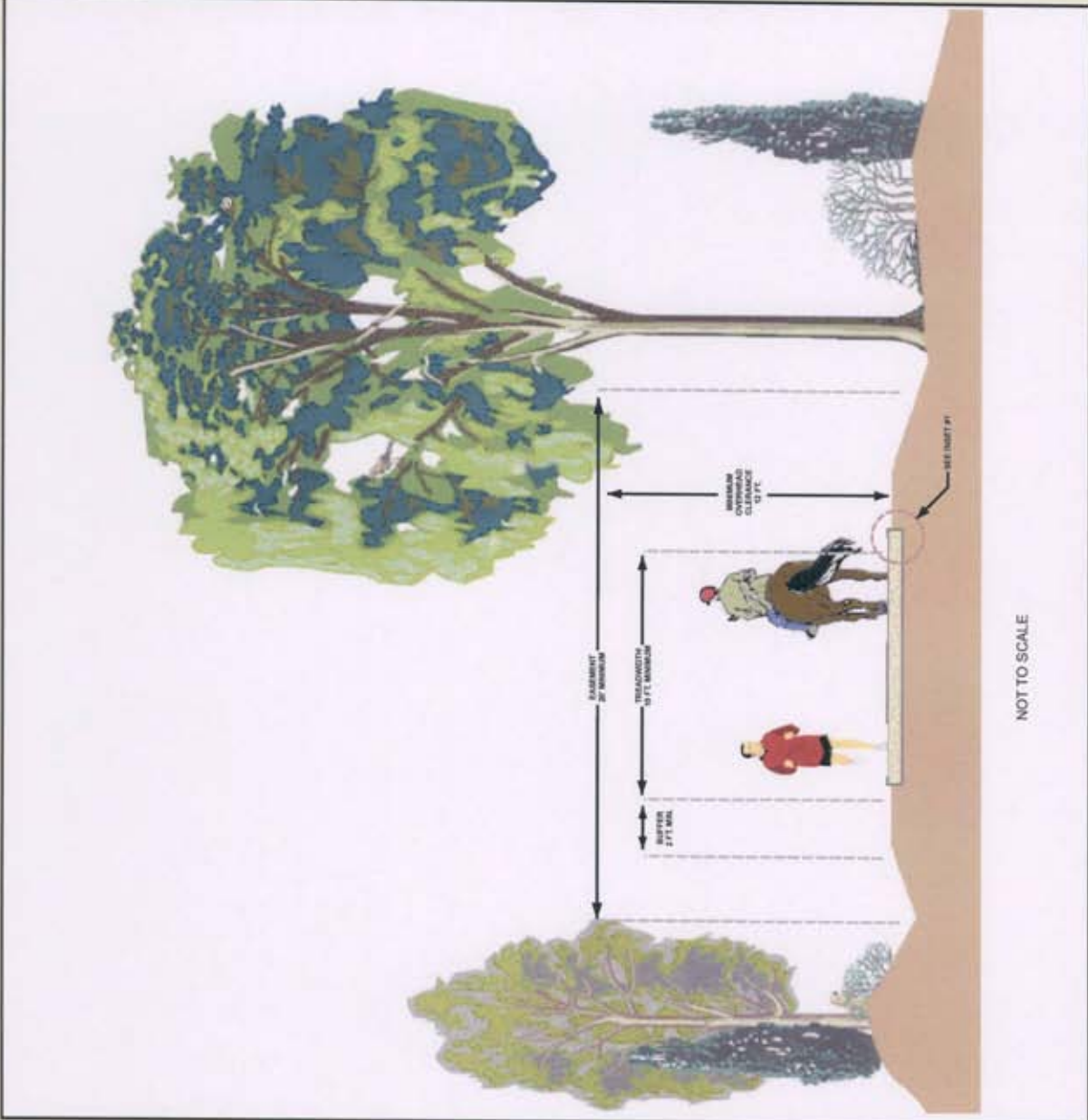
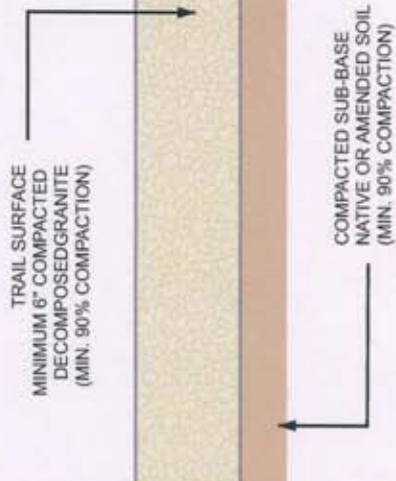
INSET #1



**NOTE:**

STAKES SHALL BE INSTALLED A MINIMUM OF FIVE (5) FEET ON CENTER ALONG THE ENTIRE LENGTH OF HEADER AND AT ALL ENDS OF BOARDS

INSET #2



NOT TO SCALE



Trail Detail: PARKS - 3002

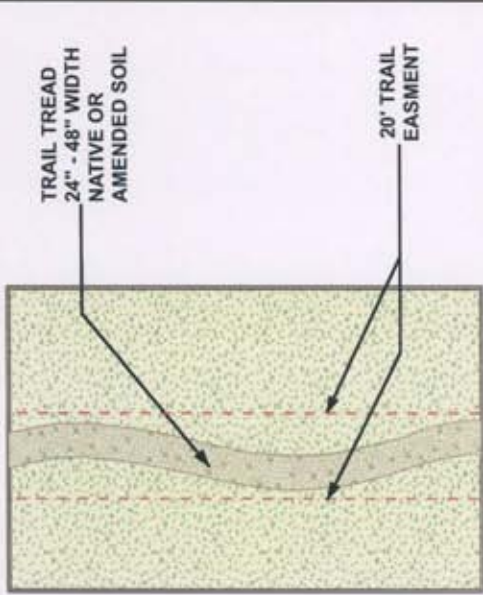
**NOTE:**  
All irrigation piping and wires routed under D.G. trails and concrete headers shall be installed inside SCH. 40 sleeves as if under paving.

# REGIONAL TRAIL IN RURAL AREAS

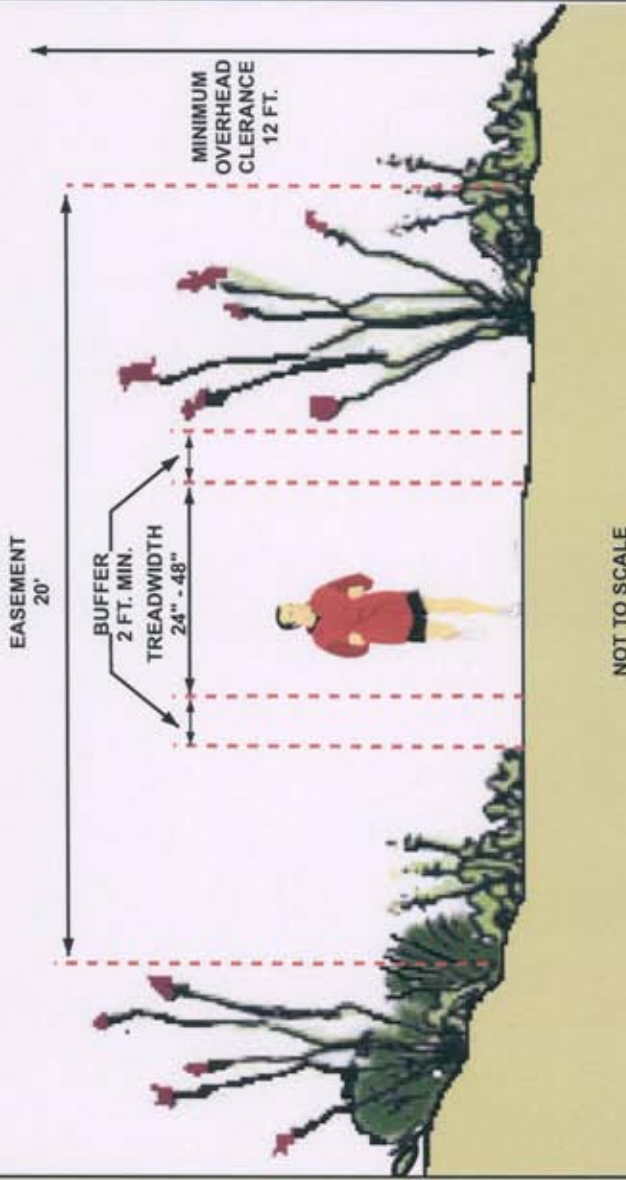
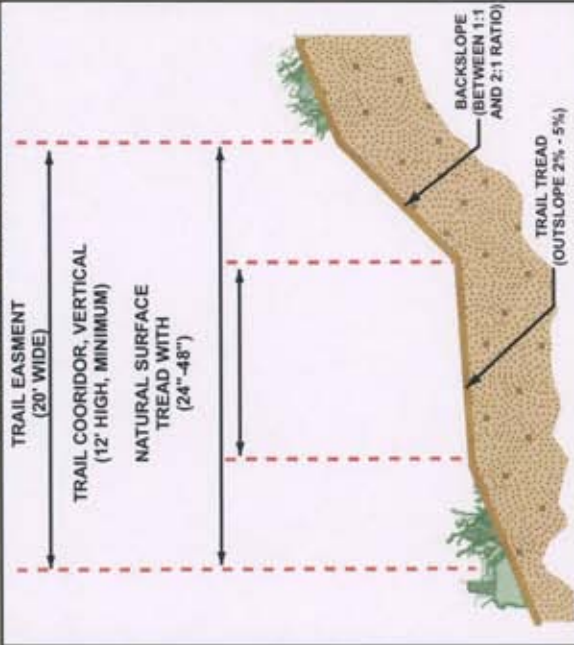
Riverside County Regional Park  
& Open-Space District

Parks Planning Division  
July 2009

**OPEN-SPACE TRAIL PLAN VIEW**



**OPEN-SPACE TRAIL CROSS-SECTION**



**NOTES:**

- #1 - TRAIL TREAD SHALL BE OUTSLOPED AND FREE DRAINING, NOT CROWNED, TO PROVIDE POSITIVE DRAINAGE ACROSS THE TRAIL TO PREVENT SILTATION AND WATER PONDING.
- #2 - WOODY MATERIAL GREATER THAN 1/2" DIAMETER SHALL BE REMOVED FROM THE TRAIL TREAD (i.e. STUMPS, LOGS, BRUSH, ROOTS). REMOVE ROOTS MORE THAN 2" IN DIAMETER FROM THE BACKSLOPE.
- #3 - MAXIMUM SIZE OF LOOSE ROCK MATERIAL TO BE LEFT IN TRAIL SHALL NOT EXCEED 3". ALL ROCKS GREATER THAN 3" SHALL BE PLACED ON THE DOWN SLOPE OF THE TRAIL.
- #4 - AVERAGE MAXIMUM GRADE OF THE TRAIL TREAD SHOULD NOT EXCEED 8%.
- #5 - MAXIMUM GRADE OF THE TRAIL TREAD SHOULD NOT EXCEED 12% OVER A DISTANCE OF 40 FEET.

Riverside County Regional Park  
& Open Space District  
Parks Planning Division  
October 2008

**REGIONAL TRAIL  
IN OPEN-SPACE AREAS**



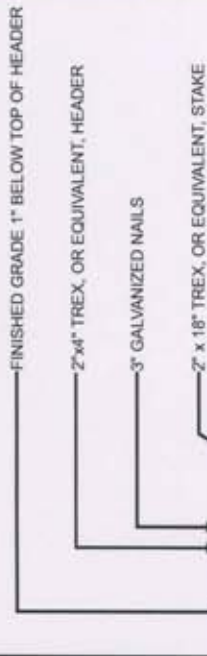
**Trail Detail: PARKS - 3003**

**NOTE:**

All irrigation piping and wires routed under trails shall be installed inside SCH. 40 sleeves as if under paving.



INSET #1



**NOTE:**

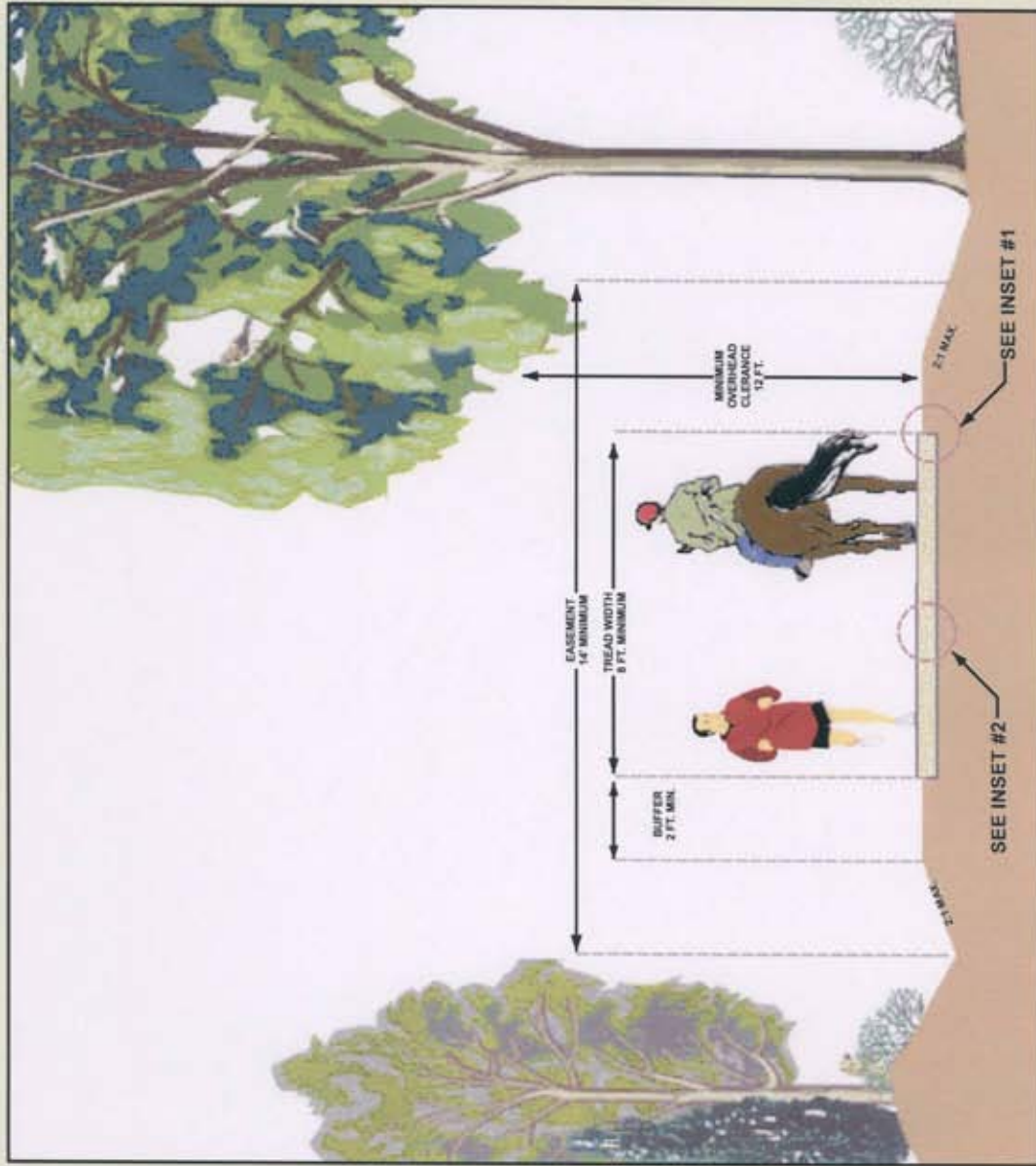
STAKES SHALL BE INSTALLED A MINIMUM OF FIVE (5) FEET ON CENTER ALONG THE ENTIRE LENGTH OF HEADER AND AT ALL ENDS OF BOARDS

ALL IRRIGATION PIPING AND WIRES ROUTED UNDER D.G. TRAILS SHALL BE INSTALLED INSIDE SCH. 40 SLEEVES AS IF UNDER PAVING.

INSET #2

TRAIL SURFACE  
MINIMUM 6" COMPACTED  
DECOMPOSED GRANITE  
(MIN. 90% COMPACTION)

COMPACTED SUB-BASE;  
NATIVE OR AMENDED SOIL  
(MIN. 90% COMPACTION)



NOT TO SCALE

Riverside County Regional Park  
& Open Space District  
Parks Planning Division  
December 2005

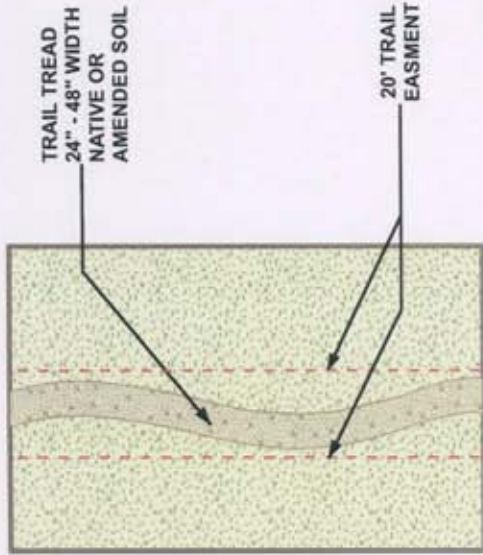


Trail Detail: **PARKS - 4001**

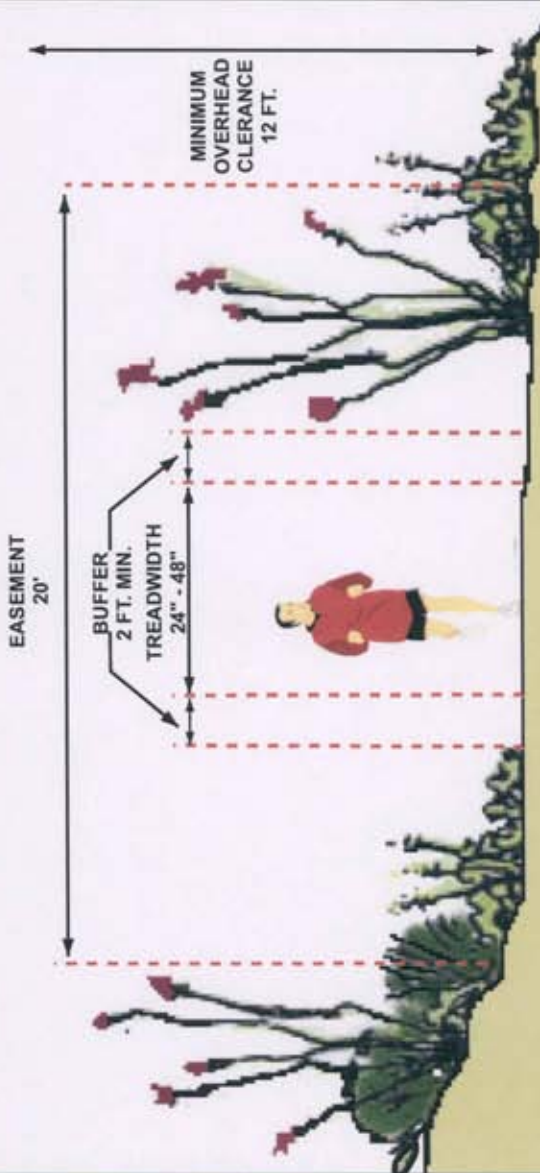
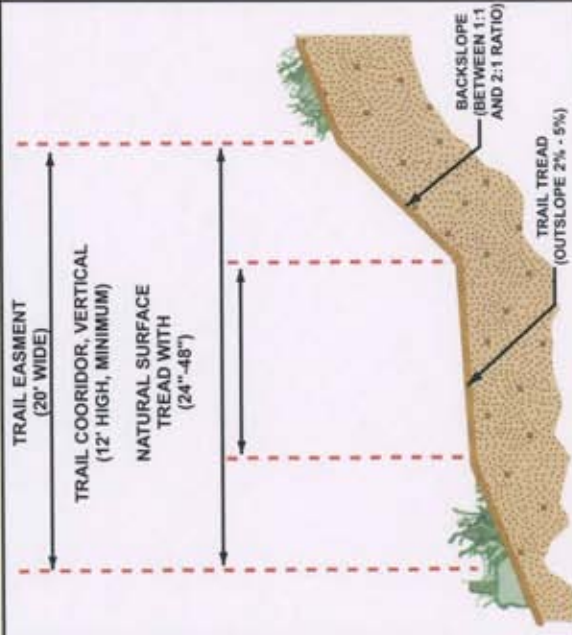
NOTE: All irrigation piping and wires routed under D.G. trails and concrete headers shall be installed inside SCH. 40 sleeves as if under paving.

# COMMUNITY TRAIL

**OPEN-SPACE TRAIL PLAN VIEW**



**OPEN-SPACE TRAIL CROSS-SECTION**



NOT TO SCALE

**NOTES:**

- #1 - TRAIL TREAD SHALL BE OUTSLOPED AND FREE DRAINING, NOT CROWNED, TO PROVIDE POSITIVE DRAINAGE ACROSS THE TRAIL TO PREVENT SILTATION AND WATER PONDING
- #2 - WOODY MATERIAL GREATER THAN 1/2" DIAMETER SHALL BE REMOVED FROM THE TRAIL TREAD (I.e. STUMPS, LOGS, BRUSH, ROOTS). REMOVE ROOTS MORE THAN 2" IN DIAMETER FROM THE BACKSLOPE.
- #3 - MAXIMUM SIZE OF LOOSE ROCK MATERIAL TO BE LEFT IN TRAIL SHALL NOT EXCEED 3". ALL ROCKS GREATER THAN 3" SHALL BE PLACED ON THE DOWN SLOPE OF THE TRAIL.
- #4 - AVERAGE MAXIMUM GRADE OF THE TRAIL TREAD SHOULD NOT EXCEED 8%.
- #5 - MAXIMUM GRADE OF THE TRAIL TREAD SHOULD NOT EXCEED 12% OVER A DISTANCE OF 40 FEET.



**Trail Detail: PARKS - 3003**

**NOTE:**

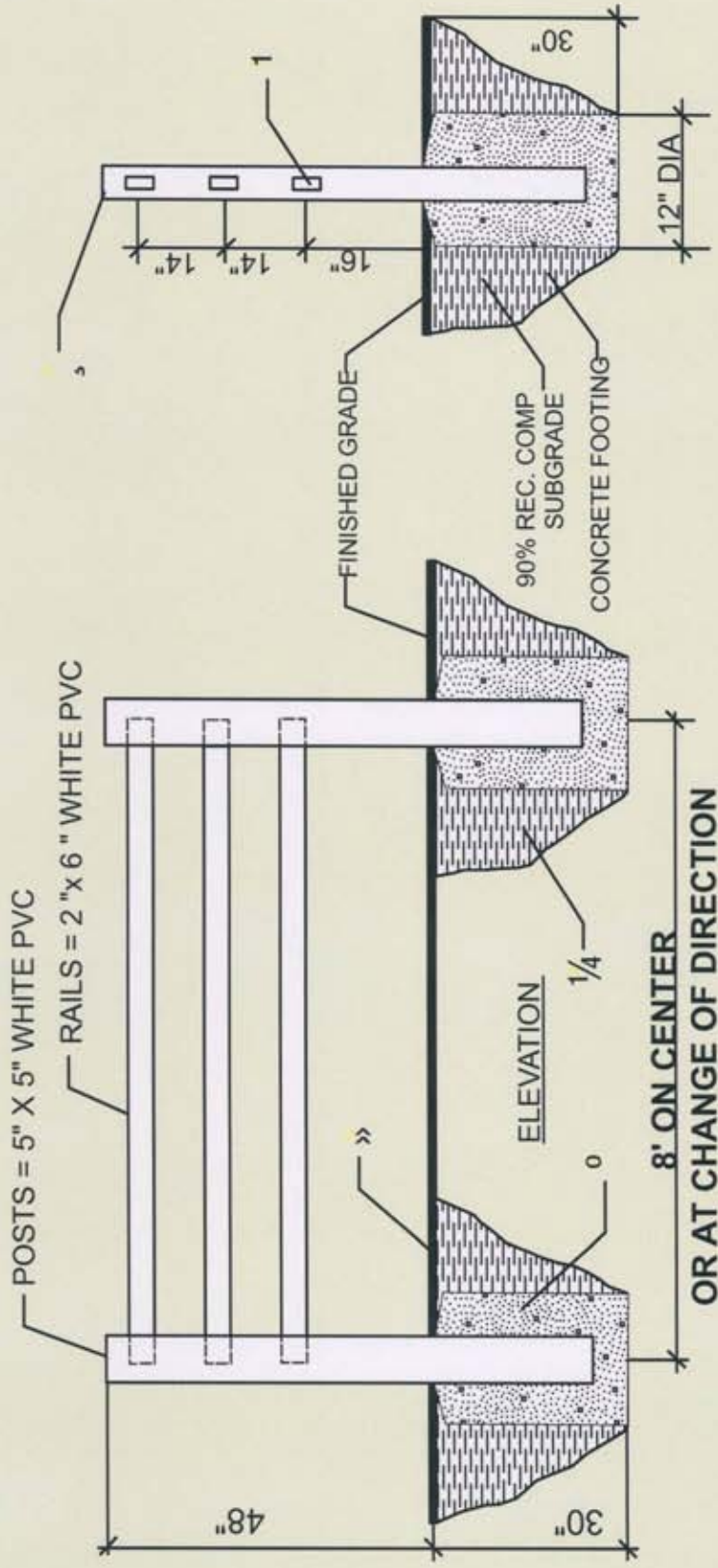
All irrigation piping and wires routed under trails shall be installed inside SCH. 40 sleeves as if under paving.

**REGIONAL TRAIL  
IN OPEN-SPACE AREAS**

Riverside County Regional Park  
& Open Space District  
Parks Planning Division  
October 2008



## **Trail Details**



**PROFILE DIMENTIONS**

	CROSS SECTION	WALL THICKNESS	CORNER RADIUS
POSTS	5" x 5"	0.170"	3/8"
RAILS	2" x 6"	0.125"	5/16"

5' X 5" WHITE PVC POST WITH CAP @ 8'-0" O.C. MAX. EMBED INTO FOOTING 2' MIN.

1 2" X 6" WHITE PVC RAILS ATTACHED TO POST.

0 12" DIA. 30" DEEP CONCRETE FOOTING.

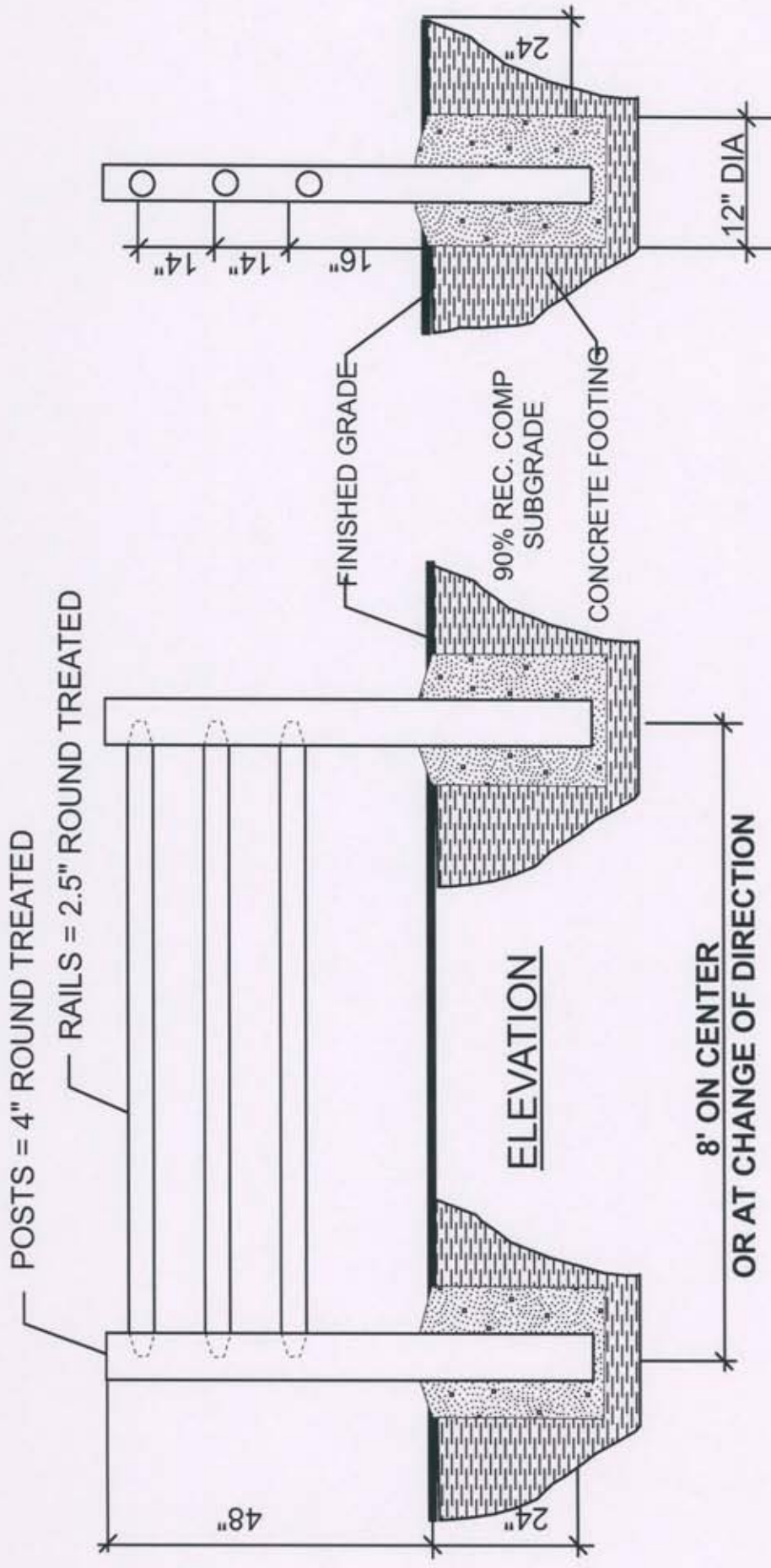
>> FINISH GRADE.

1/4 COMPACTED SUBGRADE PER SOIL ENGINEER'S REPORT



# VINYL FENCE SPECIFICATIONS

Riverside County Regional Park  
& Open Space District  
Parks Planning Division  
July 2009



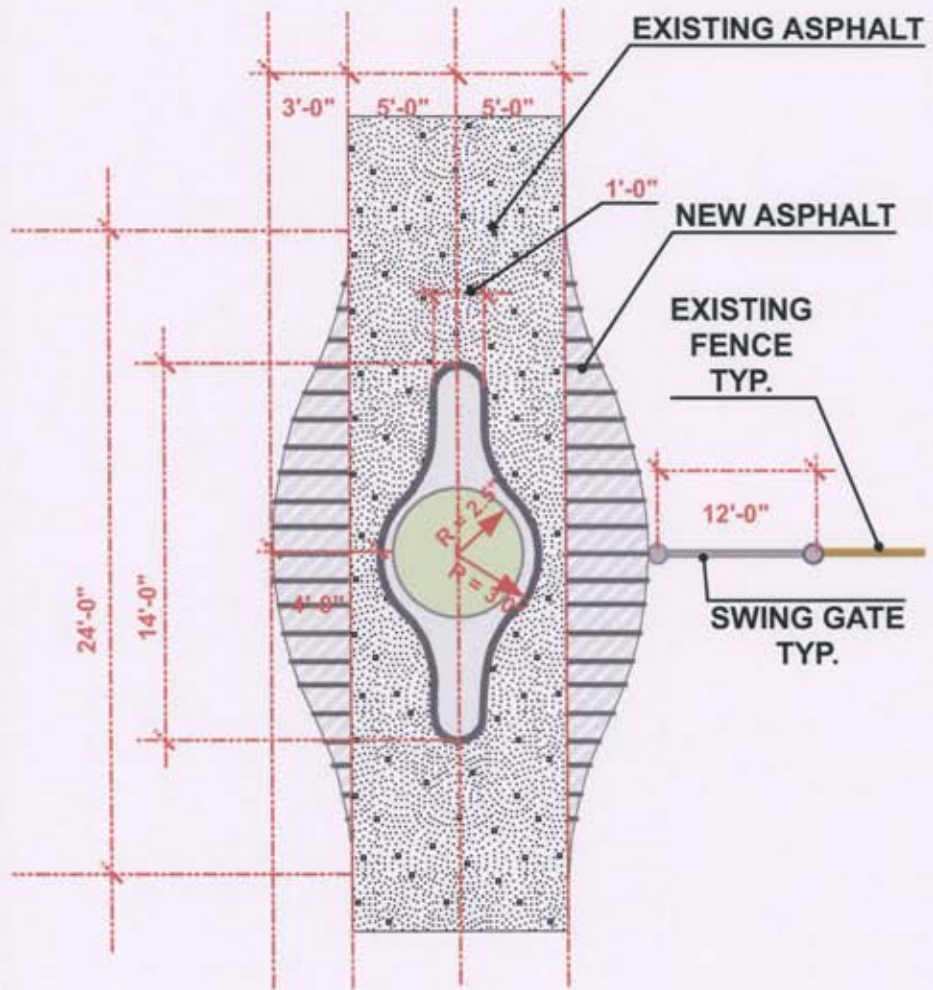
# 3 Rail Wood Post Fence

NOT TO SCALE



NOTES

Plan View



Fencing Detail



BOLLARD REPLACEMENT DETAIL

Santa Ana River Trail  
Hidden Valley Wildlife Area



No. Scale

Drawn By

Sheet No.

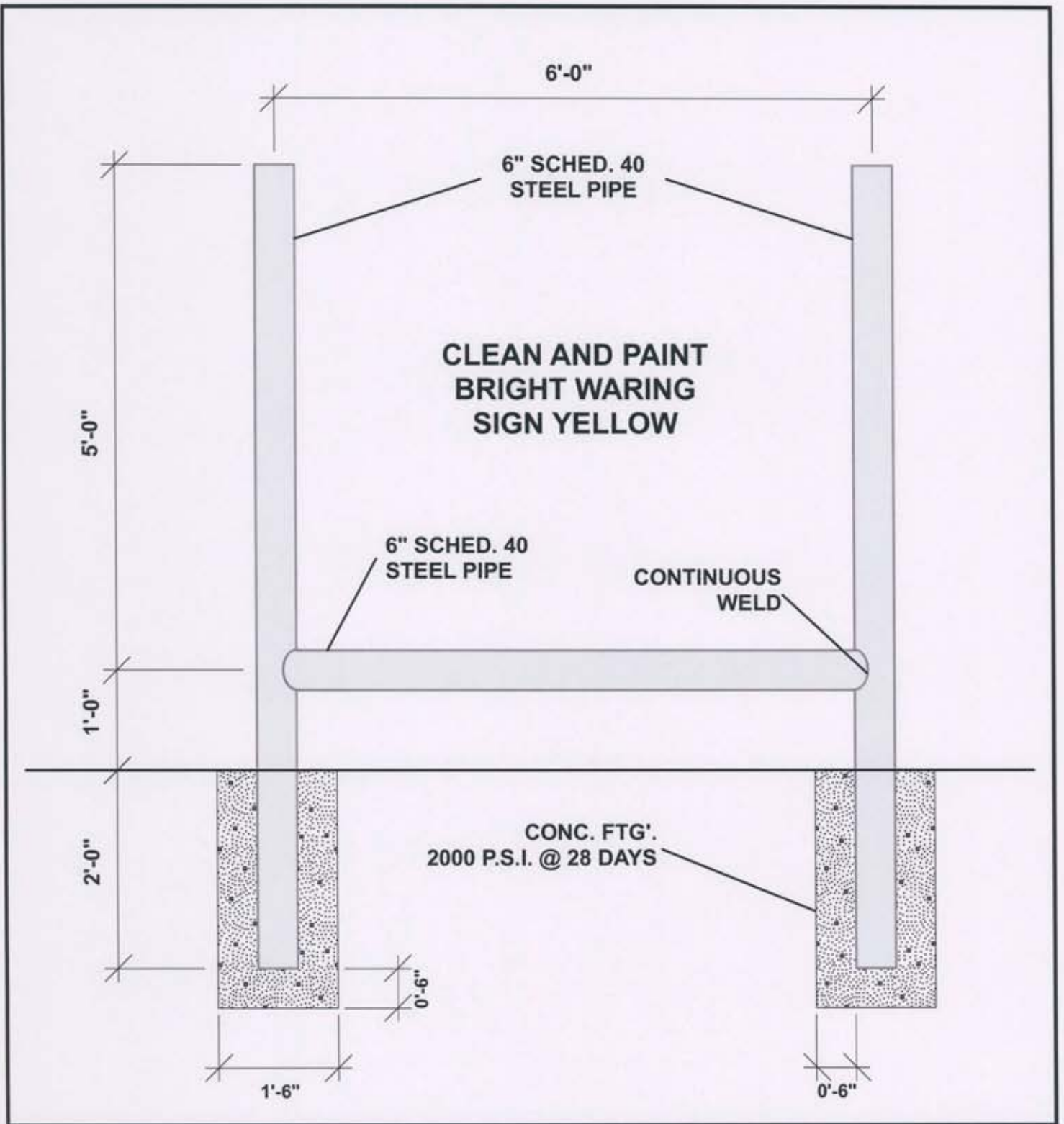
1 of 1

Bollard Replacement Detail

Drawn By: Parks Planning Division

Checked by: Parks Planning Division

Date: July 13, 2009



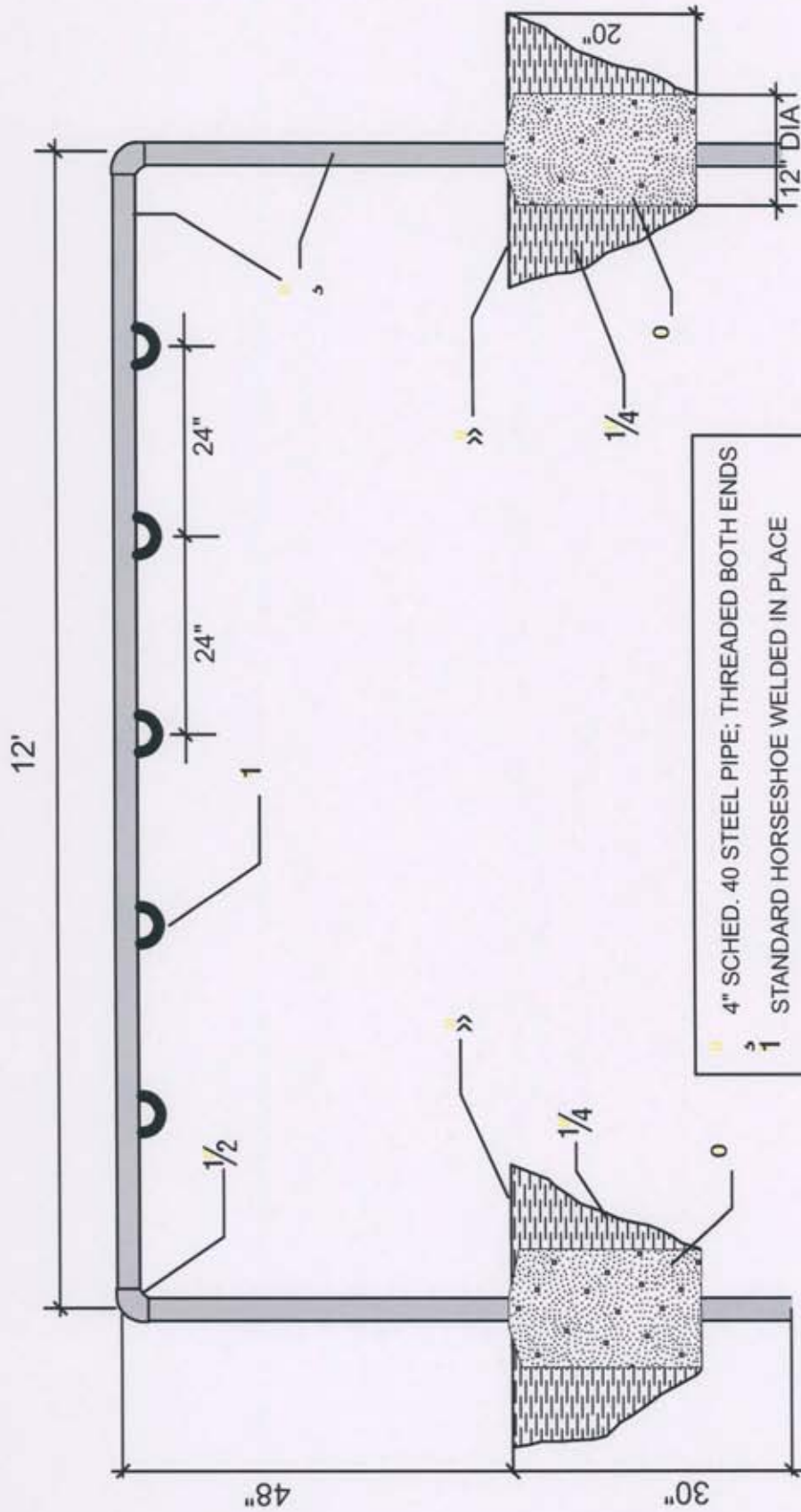
RIVERSIDE COUNTY REGIONAL PARK & OPEN-SPACE DISTRICT

### TYPICAL STEP-OVER DETAIL

DRAWN BY:

SHEET:

DATE:



- 4" SCHED. 40 STEEL PIPE; THREADED BOTH ENDS
- 1 STANDARD HORSESHOE WELDED IN PLACE
- 0 12" DIA. CONCRETE FOOTING MIN. 20" DEEP
- » FINISH GRADE
- 1/4 SUBGRADE - 90% REC. COMPACTION
- 1/2 90 DEGREE THREADED ELBOW FITTING - 4" SCHED. 40 STEEL PIPE



# HITCHING RAIL SPECIFICATIONS

Riverside County Regional Park  
 & Open Space District  
 Parks Planning Division  
 April 2005



# Trail Project Conditions of Approval



# Conditions

## Project Conditions

### PAR Conditions Regional Trail

Milestone 10



Area Plan Map No. \_\_\_\_; the \_\_\_\_\_ Area Plan, identifies a Regional Trail type(s),  Rural,  Urban,  Class 1 Bikeway,  Combination Trail,  Open Space Trail, impacted by the proposed project. The applicant is required to prepare an exhibit/trail plan showing the trail alignment(s). If the trail is adjacent to a roadway, it is to be located entirely outside of the road right-of-way (unless prior approval is granted from the Riverside County Transportation Department). The trail plan shall be submitted to the Regional Park and Open-Space District for review and approval. Prior to development of the plan or project submittal, it is advised that the applicant set up an appointment with the Park District in order to review trail(s) issues by contacting the District at 951.955.4300. Additionally, the applicant can obtain trail requirement assistance in the Riverside County Regional Park and Open-Space District Trail Standards, available on disc from the Regional Park and Open-Space District Headquarters, 4600 Crestmore Road, Riverside CA 92509 or the, Riverside County Planning Department, 9th Floor and 2nd Floor Counter County Administrative Center. It is also available on the District's web-site at <http://www.riversidecountyparks.org> and following heading marked "Trails" and following the links to the Standards and Area Plan Trail Maps or the Riverside County Planning Web-site at <http://rctlma.org/planning/index.html>.



### Community Trail

CSA or Local Park District Jurisdiction

Milestone

10



Area Plan Map No. \_\_\_\_, the \_\_\_\_\_ Area Plan, identifies a Community Trail(s) impacted by the proposed project. The project is within the service area boundary of a CSA or Local Park District. The Community Trail(s) within the project area will be responsibility of the local recreation provider. The local recreation provider for this project will ultimately be responsible for the conditioning and maintenance of the trail(s). The applicant is required to contact the CSA or local recreation district identified below in order to review trail(s) issues.

CSA Coordinator , CSA No. \_\_\_\_\_  
1325 Spruce Street  
Riverside, CA 92507  
Phone: 951.955.3100

Jurupa Parks and Recreation District  
4810 Pedley Rd., Riverside, CA  
Phone 951.361.2090

ValleyWide Recreation and Park District  
901 W. Esplanade, San Jacinto, CA  
Phone: 951.654.1505

Beaumont Cherry-Valley Wide Recreation and Park District  
390 W. Oak Valley Pkwy., Beaumont, CA  
Phone: 951.845.9555

Desert Recreation District  
45-305 Oasis St., Indio, CA  
Phone: 760.347.3484

Community Trail Milestone 10  
Non-CSA or Non-Local Park District Jurisdiction

Area Plan Map No. \_\_\_\_\_, the \_\_\_\_\_ Area Plan, identifies a Community Trail(s) which are impacted by the proposed project. The applicant is required to prepare an exhibit/trail plan showing the trail alignment(s). If the trail is adjacent to a roadway, it is to be located entirely outside of the road right-of-way (unless prior approval is granted from the Riverside County Transportation Department). The trail plan shall be submitted to the Regional Park and Open-Space District for review and approval. Prior to development of the plan or project submittal, it is advised that the applicant set up an appointment with the Park District in order to review trail(s) issues by contacting the District at 951.955.4300. Additionally, the applicant can obtain trail requirement assistance in the Riverside County Regional Park and Open-Space District Trail Standards, available on disc from the Regional Park and Open-Space District Headquarters, 4600 Crestmore Road, Riverside CA 92509 or the, Riverside County Planning Department , 9th Floor and 2nd Floor Counter County Administrative Center. It is also available on the District's web-site at <http://www.riversidecountyparks.org> and following heading marked "Trails" and following the links to the Standards and Area Plan Trail Maps or the Riverside County Planning Web-site at <http://rctlma.org/planning/index.html>.



# Conditions

## Continued

### DRT Corrections Condition Regional Trail

Milestone 5



The Regional Park and Open-Space District has identified that the proposed project is located within Area Plan Map No. \_\_\_\_\_, the \_\_\_\_\_ Area Plan. The Area Plan identifies a Regional Trail,  Rural  Urban,  Class 1 Bikeway,  Combination Trail,  Open Space trail(s) impacted by the proposed project. The applicant is required to prepare an amended exhibit/trail plan showing the trail alignment(s) and easement areas. If a trail is adjacent to a roadway, it is to be located entirely outside of the road right-of-way (unless prior approval is granted from the Riverside County Transportation Department and Regional Park and Open-Space District). The amended exhibit plan shall be submitted to the Regional Park and Open-Space District for reviews and approvals. The amended exhibit/trail plan is to provide: alignments, easement widths, typical cross sections, fencing, trail separations, pavement markings, street crossings, signage bollards (if applicable) and landscaping and irrigation plans. The applicant is required to schedule an appointment with the Park District at 951.955.4300 in order to review trail(s) issues and development standards. Additionally, the applicant can obtain trail requirement assistance in the Riverside County Regional Park and Open-Space District Trail Standards, available on the District's web-site at <http://www.riversidecountyparks.org> and following heading marked "Trails" and following the links to the Standards and Area Plan Trail Maps or the Riverside County Planning Web-site at <http://rctlma.org/planning/index.html>.

The Regional Park and Open-Space District has identified that the proposed project is located within Area Plan Map No. \_\_\_\_\_, the \_\_\_\_\_ Area Plan. The Area Plan identifies a Community Trail(s) impacted by the proposed project. The Community Trail(s) within the project boundary will be under the jurisdiction of the local recreation provider. The local recreation provider for this project will ultimately be responsible for the trail(s) conditioning and maintenance of the trail(s). The applicant is required to contact the CSA or local recreation district identified below in order to address the identified trail(s) impacts. The applicant is also required to submit a letter to the Regional Park and Open-Space outlining mitigation of the trail(s) impacts.

CSA Coordinator , CSA No. \_\_\_\_\_  
1325 Spruce Street  
Riverside, CA 92507  
Phone: 951.955.3100

Jurupa Parks and Recreation District  
4810 Pedley Rd., Riverside, CA  
Phone 951.361.2090

ValleyWide Recreation and Park District  
901 W. Esplanade, San Jacinto, CA  
Phone: 951.654.1505

Beaumont Cherry-Valley Wide Recreation and Park District  
390 W. Oak Valley Pkwy., Beaumont, CA  
Phone: 951.845.9555

Recreation District of the Desert  
45-305 Oasis St., Indio, CA  
Phone: 760.347.3484



Community Trail  
Non-CSA or Non-Local Park District Jurisdiction

Milestone 5

The Regional Park and Open-Space District has identified that the proposed project is located within Area Plan Map No. \_\_\_\_\_, the \_\_\_\_\_ Area Plan. The Area Plan identifies a Community Trail(s) impacted by the proposed project. The applicant is required to prepare an amended exhibit/trail plan showing the trail alignment(s) and easement area. If the trail(s) is adjacent to a roadway, it is to be located entirely outside of the ultimate road "right of way" (unless prior approval, is granted from Riverside County Transportation Department and the Regional Park and Open-Space District). The amended exhibit/trail plan shall be submitted to the Regional Park and Open-Space District for reviews and approvals. The amended exhibit/trail plan is to provide: alignments, easement widths, typical cross sections, fencing, trail separations, pavement markings, street crossings, signage bollards (if applicable) and landscaping and irrigation plans. The applicant is required to schedule an appointment with the District( phone 951.955.4300) in order to review the trail issues and development standards. Additionally the applicant can obtain trail requirement assistance in the Riverside County Regional Park and Open-Space Trail Standards, available on the District's web-site at <http://www.riversidecountyparks.org> and following heading marked "Trails" and following the links to the Standards and Area Plan Trail Maps or the Riverside County Planning Web-site at <http://rctlma.org/planning/index.html>.

**Project Approvals**

Milestone 30

Prior to issuance of project approval, the applicant shall submit a project exhibit/trail plan identifying the proposed trail network(s) under the jurisdiction of the Regional Park and Open-Space District and/or other entity. Included as part of the exhibit the applicant shall provide for review and approval; all alignments, easement widths, typical trail cross sections, fencing, trail separations, pavement markings, street crossings signage, bollards (if applicable) and landscape and irrigation plans.

Prior to or in conjunction with the project approval the project applicant shall identify the trail(s) maintenance entity (in writing) to County Planning Department and the Regional Park and Open-Space District.

**Map Recordation**

Milestone 50

Regional and Community Trail  
(Non-CSA or Non-Local Park District)

Prior to, or in conjunction with the recordation of the project map, the applicant shall offer the Regional Trail easement(s) shown on the map for dedication to Riverside County Regional Park and Open-Space District or County managed Landscape and Lighting Maintenance District for trails purposes. Said easements will offered on behalf of the vested interest of the citizens of Riverside County and will not become part of the District's maintained trail system.

**Trail Maintenance**

Milestone 50, 60, 80, 90, 100

Regional Trails

The applicant shall enter into a trail maintenance agreement with the Regional Park and Open-Space District, or form or annex into an existing County managed Landscape Lighting Maintenance District accepting trails maintenance as approved by the Riverside County Planning Department for the maintenance of the all regional trail(s) identified on this project. The applicant, or successors-in-interest or assignees, shall be responsible for the maintenance of said trails and easement areas such time as the maintenance is taken over by the appropriate maintenance District or entity. The applicant must provide a letter of agreement to the Planning Department and the Park District (if other than the District) that trail maintenance will be provided.

**Community Trail**

Milestone 50, 60 80, 90, 100

CSA or Local Park District Jurisdiction

The Community Trail(s) within the project boundary will be under jurisdiction of the local recreation provider. The local recreation provider for this project will ultimately be responsible for the maintenance of the trail(s). The applicant shall enter into a trail maintenance agreement with the local recreation provider or form or annex into a trail(s) maintenance district managed by the appropriate agency listed below and approved by the County of Riverside Planning Department:

CSA Coordinator , CSA No. \_\_\_\_\_  
1325 Spruce Street  
Riverside, CA 92507  
Phone: 951.955.3100

Jurupa Parks and Recreation District  
4810 Pedley Rd., Riverside, CA  
Phone 951.361.2090

ValleyWide Recreation and Park District  
901 W. Esplanade, San Jacinto, CA  
Phone: 951.654.1505

Beaumont Cherry-Valley Wide Recreation and Park District  
390 W. Oak Valley Pkwy., Beaumont, CA  
Phone: 951.845.9555

Desert Recreation District  
45-305 Oasis St., Indio, CA  
Phone: 760.347.3484

The County of Riverside Planning Department is to approve the maintenance agreement or annexation prior to its execution.

The applicant is to forward copy of the final executed agreement to the agreement for file.



Community Trail Milestone 50, 60 80, 90, 100  
Non-CSA or Non- Local Park District Jurisdiction

The applicant shall enter into a trail maintenance agreement with the Regional Park and Open-Space District or form or annex into a County managed Landscape Lighting Maintenance District accepting trails maintenance as approved by the Riverside County Planning Department for the maintenance of the all community trail(s) indentified on this project. The applicant, or successors-in-interest or assignees, shall be responsible for the maintenance of said trails and easement areas such time as the maintenance is taken over by the appropriate maintenance District or entity. The applicant must provide a letter of agreement to the Planning Department and the Park District that the trail maintenance will be provided

**Prior to the Issuance of Grading Permits** Milestone 60  
Regional Trails

Prior to or in conjunction with the issuance of grading permits, the applicant must have submitted its trail(s) exhibit/plan to the Regional Park and Open-Space District and received approval of said plan. The trails exhibit/plan shall show the trail(s) with all topography, grading, ADA compliance, fencing, cross sections, signage, pavement markings, street crossings signage, bollards (if applicable) and landscaping and irrigation.

Community Trail Milestone 60  
Non-CSA or Non-Local Park District Jurisdiction

Prior to or in conjunction with the issuance of grading permits, the applicant must have submitted its trail(s) exhibit/plan to the Regional Park and Open-Space District and received approval of said plan. The trails exhibit/plan shall show the trail(s) with all topography, grading, ADA compliance, fencing, cross sections, signage, pavement markings, street crossings signage, bollard (if applicable) and landscaping and irrigation.

**Trails Adjacent to Water Coursed or Streams**

Milestone 60

Prior to issuance of any grading permits, any proposed trail to be located alongside the bank or within the high water mark of the water course, body, or adjacent to a wetlands, the applicant shall make the appropriate inquiries to the Planning Department, other County Agencies and the regulatory agencies to obtain the necessary permits to allow trail development. The applicant will be required to submit permits to the regulatory agencies and have said permits approved prior to the start of grading operations. All permits must be copied to the Planning Department and the Regional Park and Open-Space District.

**Prior to Grading Final Inspection**

Milestone 70

Prior to final grading inspection, the applicant is required to have graded the proposed project site in accordance with the grading plan and comply with conditions of the Regional Park and Open-Space District's approved exhibit/trail plan.

Prior to the issuance of final grading inspection, the Regional Park and Open-Space District, in conjunction with a representative from Riverside County Department of Building and Safety Grading Division, shall inspect the proposed project site in order to ensure that the trail grading meets the County standards as determined by the Park District and in conjunction with the Building and Safety Department Grading Division.



**Prior to the Issuance of Given Building Permit** Milestone 80

Prior to the issuance of the \_\_\_\_\_ building permit, the applicant shall begin construction of the trail as shown on the exhibit/trail plan approved by the District. The applicant shall arrange for an inspection of the constructed trail with the Riverside County Regional Park and Open-Space District.

Prior to the issuance of the \_\_\_\_\_ building permit, the applicant shall provide written documentation to the Riverside County Planning Department and the Regional Park and Open-Space District that a trail maintenance mechanism is in place.

Prior to the issuance of the \_\_\_\_\_ building permit, the applicant shall complete construction of the trail(s) as shown on the exhibit/trail plan approved by the District and have scheduled an inspection with the District for its approval of the completed work.

**Prior to the Issuance of Occupancy Permits** Milestone 90

Prior to the issuance of the \_\_\_\_\_ occupancy permit, the applicant shall complete construction of the trails(s) with all requirements of the trail exhibit/plan being met. The applicant will coordinate a final inspection with the Regional Park and Open-Space District or its representative.

Prior to the issuance of the \_\_\_\_\_ occupancy permit, the applicant shall provide written documentation to the Riverside County Planning Department and Regional Park and Open-Space District that the trail maintenance mechanism is in place.



## **Trail Maps**

The attached maps are for reference only. For high resolution refer to Area Plans directory on this cd.

**DRAFT**  
**Tentative Trails**  
 Jurupa Area Plan

San Bernardino County

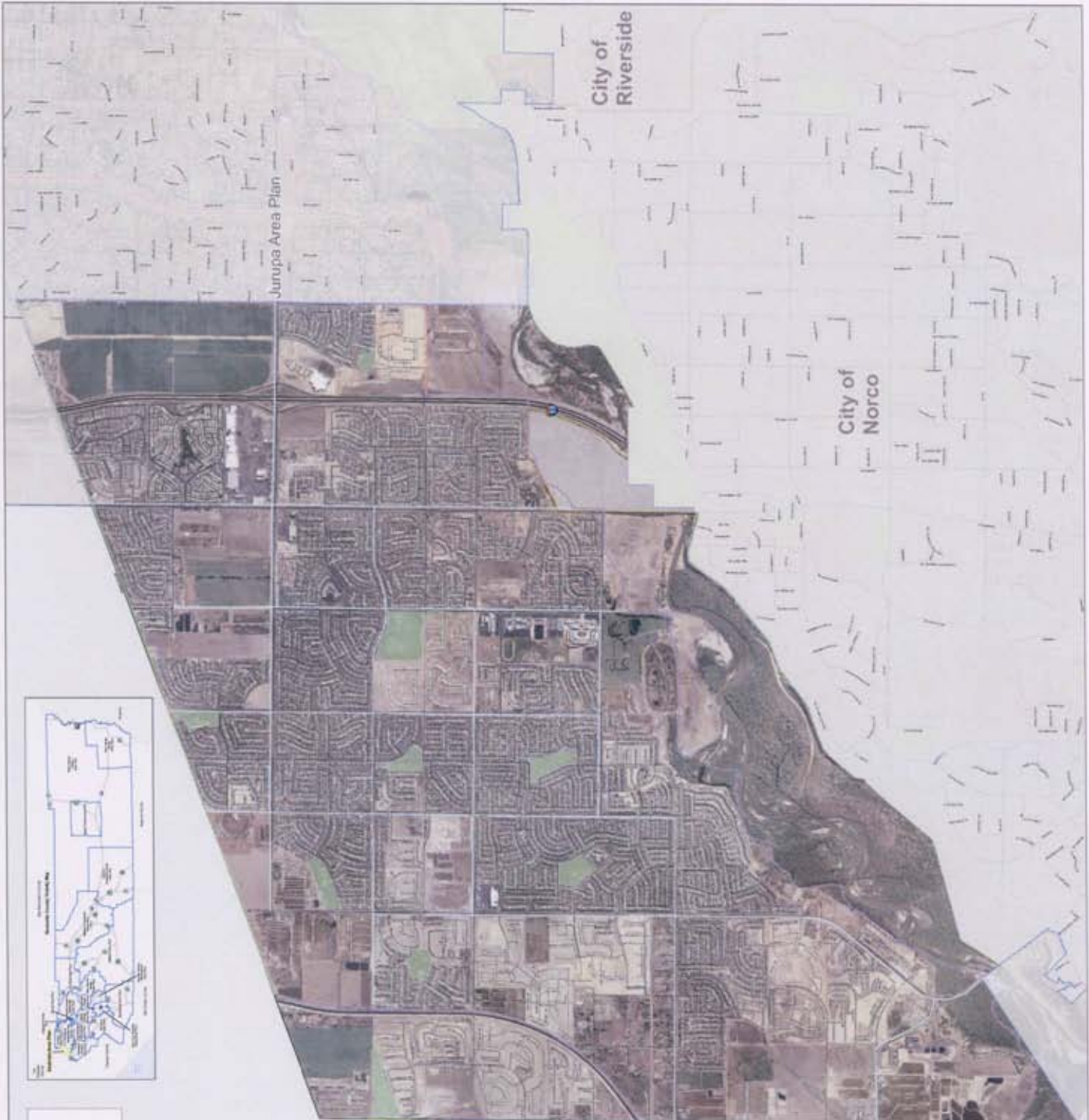
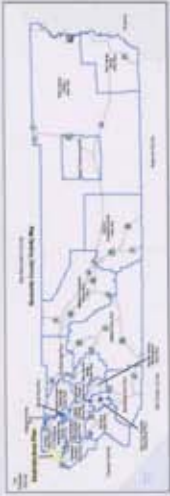


**DRAFT**  
**Tentative Trails**  
 Eastvale Area Plan

- Tentative Trails**
- Regional Trail
  - Community Trail
  - Class 1 Bike Path/Bikegreen Trail
  - Class 2 Bike Path
- Adjacent Area Plans**
- Cities
  - Parks
  - Schools

This map is intended to provide a general overview of the proposed trails network. It is not intended to be used for engineering or construction purposes. The City of Eastvale reserves the right to modify the map at any time without notice.

San Bernardino County



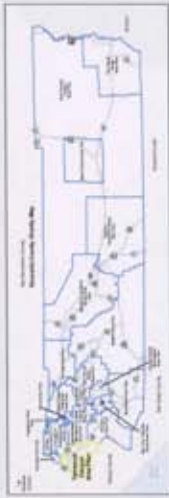
Temescal Canyon Area Plan

San Bernardino County

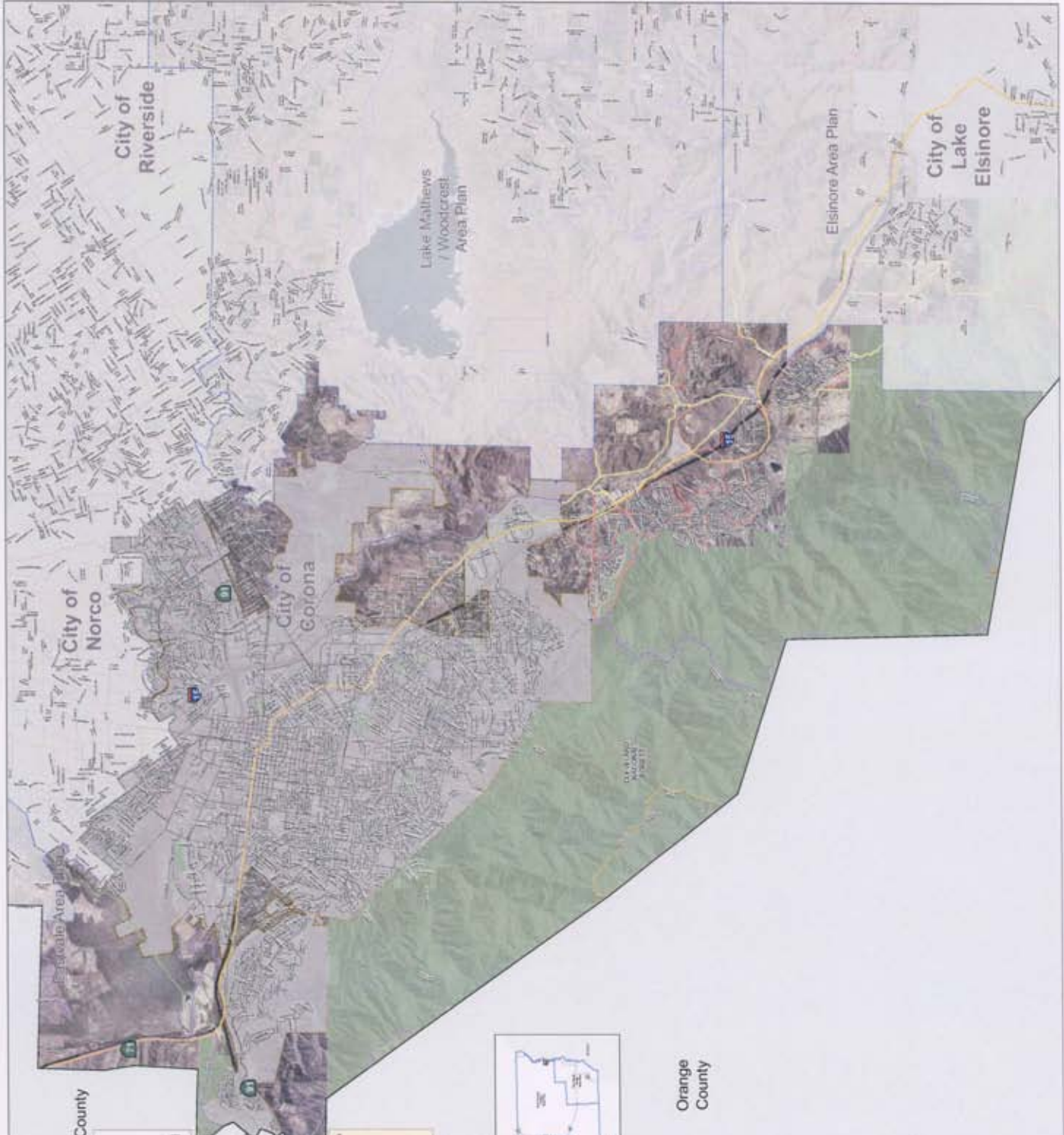
# DRAFT Tentative Trails Temescal Canyon Area Plan

- Tentative Trails**
  - Regional Trail
  - Community Trail
  - Class 1 Bike Path / Regional Trail
  - Hiking Trail
  - National Forest or Park / BLM Trails
  - Intermittent Utility Trail
- Adjacent Area Plans**
  - City
  - Park
  - Plan
  - Boundary

This map was prepared by the City of Corona, California, and is not intended to be used for any other purpose. The City of Corona, California, is not responsible for any errors or omissions on this map. The City of Corona, California, is not responsible for any damages or injuries resulting from the use of this map.



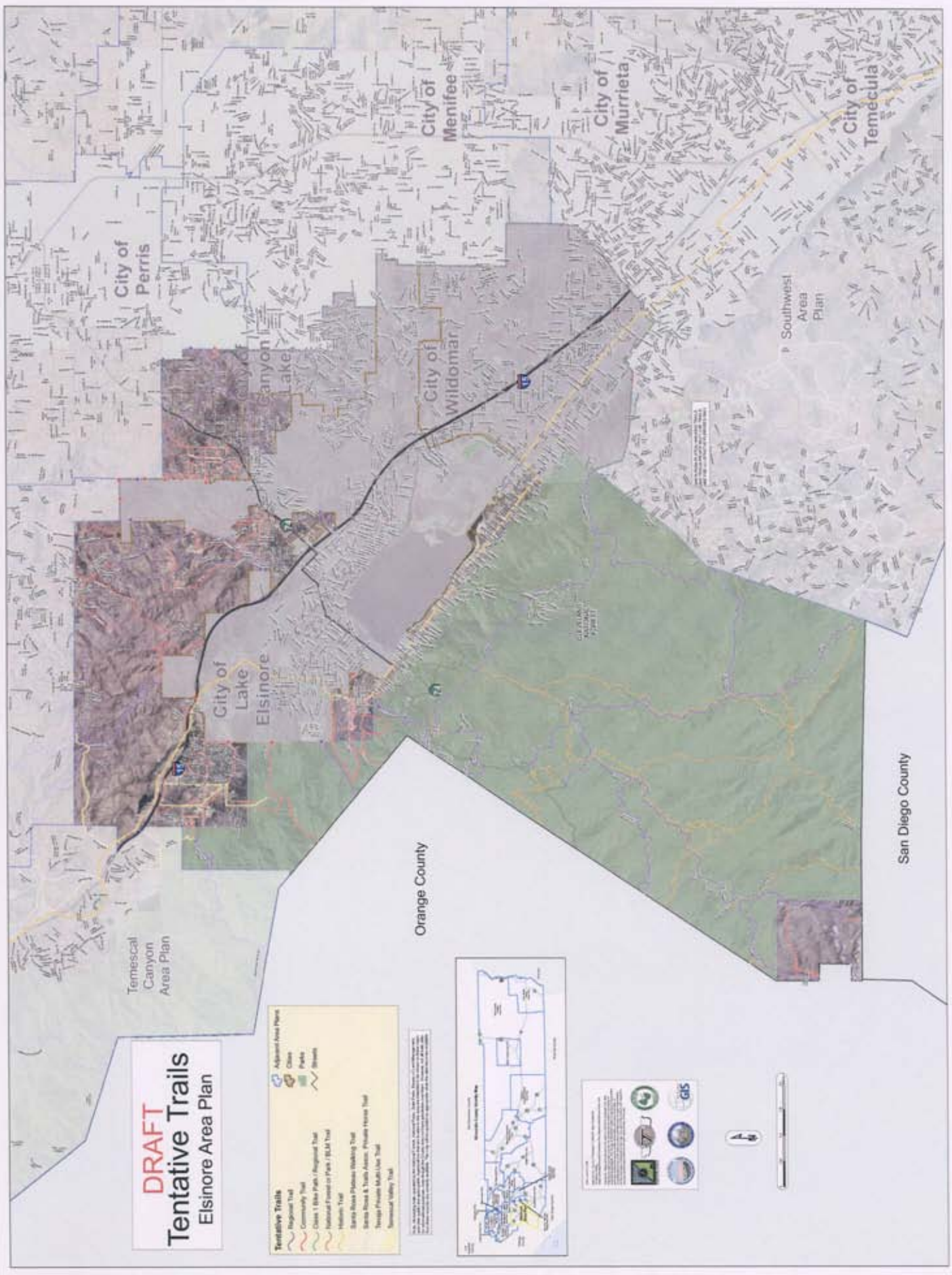
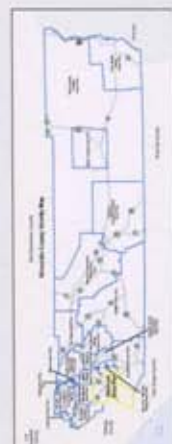
Orange  
County



# DRAFT Tentative Trails Elsinore Area Plan

- Tentative Trails**
- Regional Trail
  - Community Trail
  - Class 1 Bike Paths / Regional Trail
  - National Forest or Park / BLM Trail
  - Habitat Trail
  - State Route Pathways (Biking Trail)
  - State Route & Trail Access / Private Access Trail
  - Tentative Private Multi-Use Trail
  - Mountain Valley Trail
- Adjacent Area Plans**
- City
  - Park
  - Stream

This map was prepared using GIS data from the Elsinore Area Plan and other sources. It is intended for informational purposes only and does not constitute a legal document. For more information, please contact the Elsinore Area Plan staff.



Temescal Canyon Area Plan

Orange County

San Diego County

Southwest Area Plan

City of Lake Elsinore

City of Wildomar

City of Menifee

City of Murrieta

City of Temecula

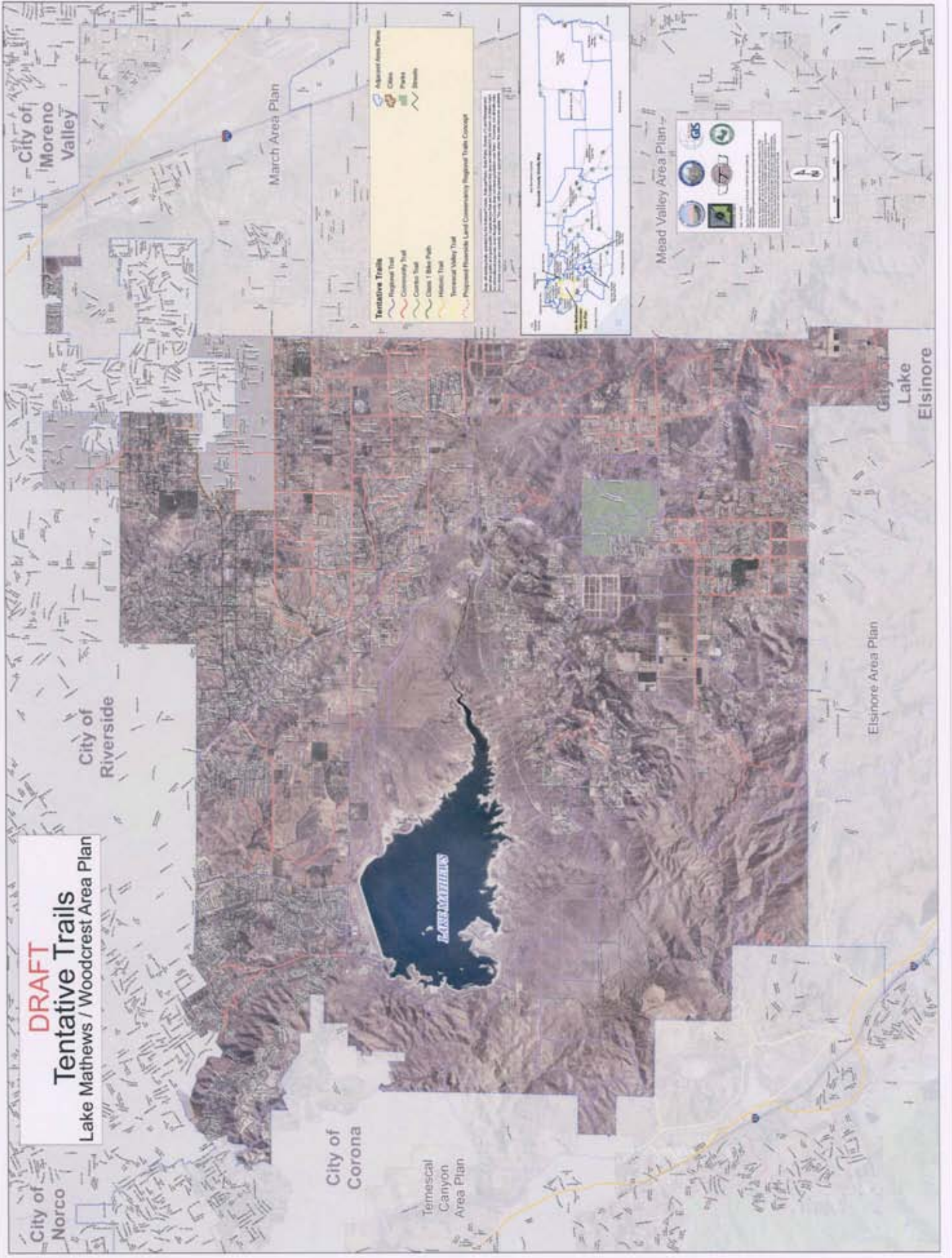
City of Perris

City of Canyon Lake

CLARK COUNTY



**DRAFT**  
**Tentative Trails**  
Lake Mathews / Woodcrest Area Plan



**DRAFT**  
**Tentative Trails**  
Highgrove Area Plan

Junipero Area Plan

**Tentative Trails**

- Regional Trail
- Community Trail
- Class 1 Bike Path / Regional Trail
- Historic Trail
- Proposed Riverside Land Community Regional Trails Concept

**Advanced Area Plans**

- City
- Park
- Woods

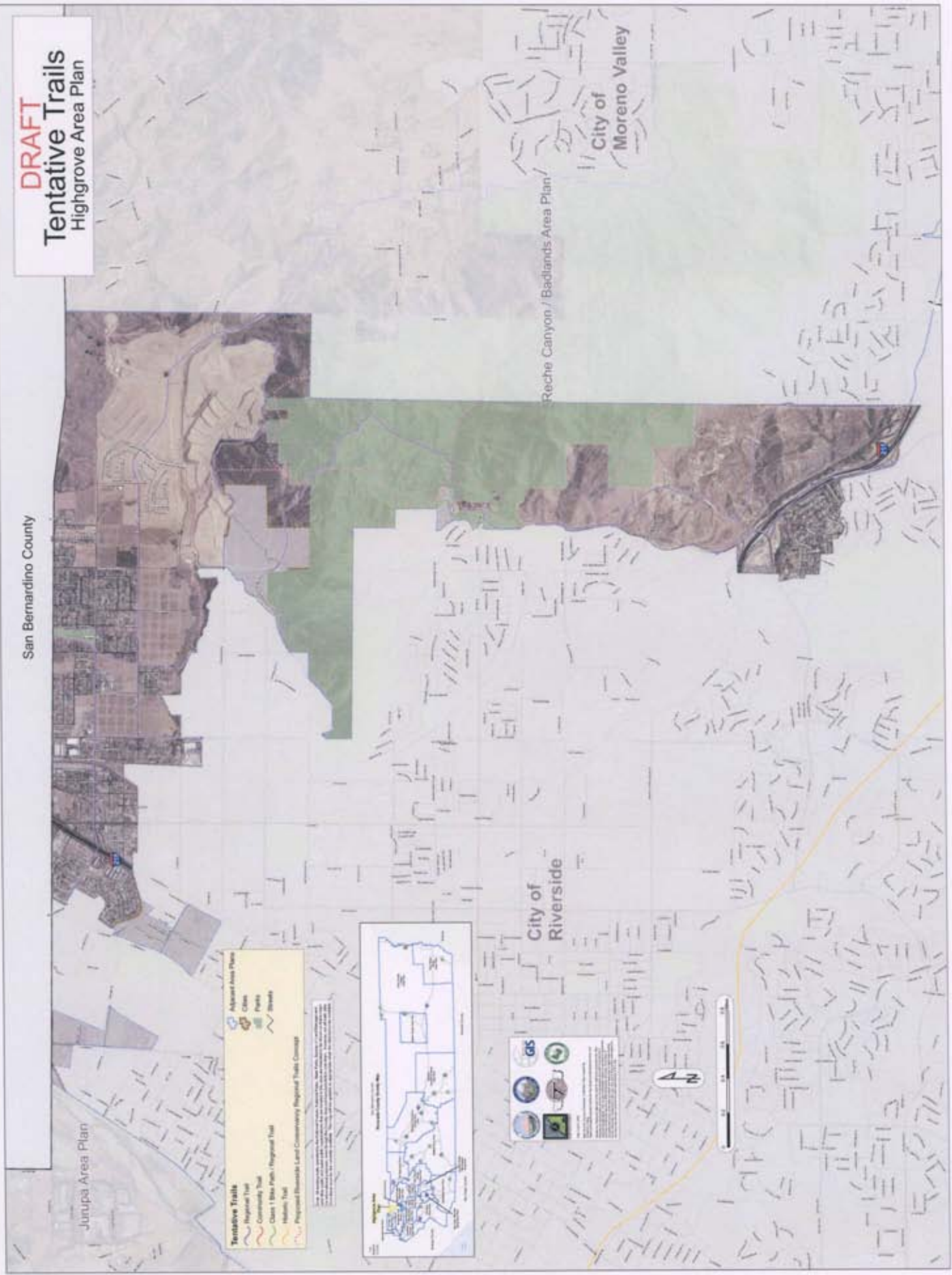
Map prepared by GIS staff using data from various sources. All rights reserved. No warranty is made for the accuracy or completeness of the information shown on this map. The information is provided for informational purposes only and should not be used for any other purpose. The information is subject to change without notice.



City of Riverside

Reche Canyon / Badlands Area Plan

City of Moreno Valley



**DRAFT**  
**Tentative Trails**  
 March Area Plan

Reche Canyon / Badlands Area Plan

City of Moreno Valley

City of Perris

City of Riverside

Mead Valley Area Plan

Lake Mathews / Woodcrest Area Plan



Map prepared by the City of Riverside Planning Department. All rights reserved. No part of this map may be reproduced without the prior written permission of the City of Riverside Planning Department.

**Tentative Trails**

- Community Trail
- Regional Trail
- Historic Trail
- Proposed Interim/Low/Commuter/Regional Trail Concept

**Adjacent Area Plans**

- City
- Park
- State



# DRAFT Tentative Trails Mead Valley Area Plan

**Tentative Trails**

- Regional Trail
- Community Trail
- Class 1 Bike Path / Regional Trail
- Class 2 Bike Path
- Habitat Trail
- Lakeview / Menifee Trail
- Proposed Riverside Level Community Regional Trail Concept

**Advanced Area Plans**

- City
- Park
- Beach

Map scale: 1 inch = 1 mile

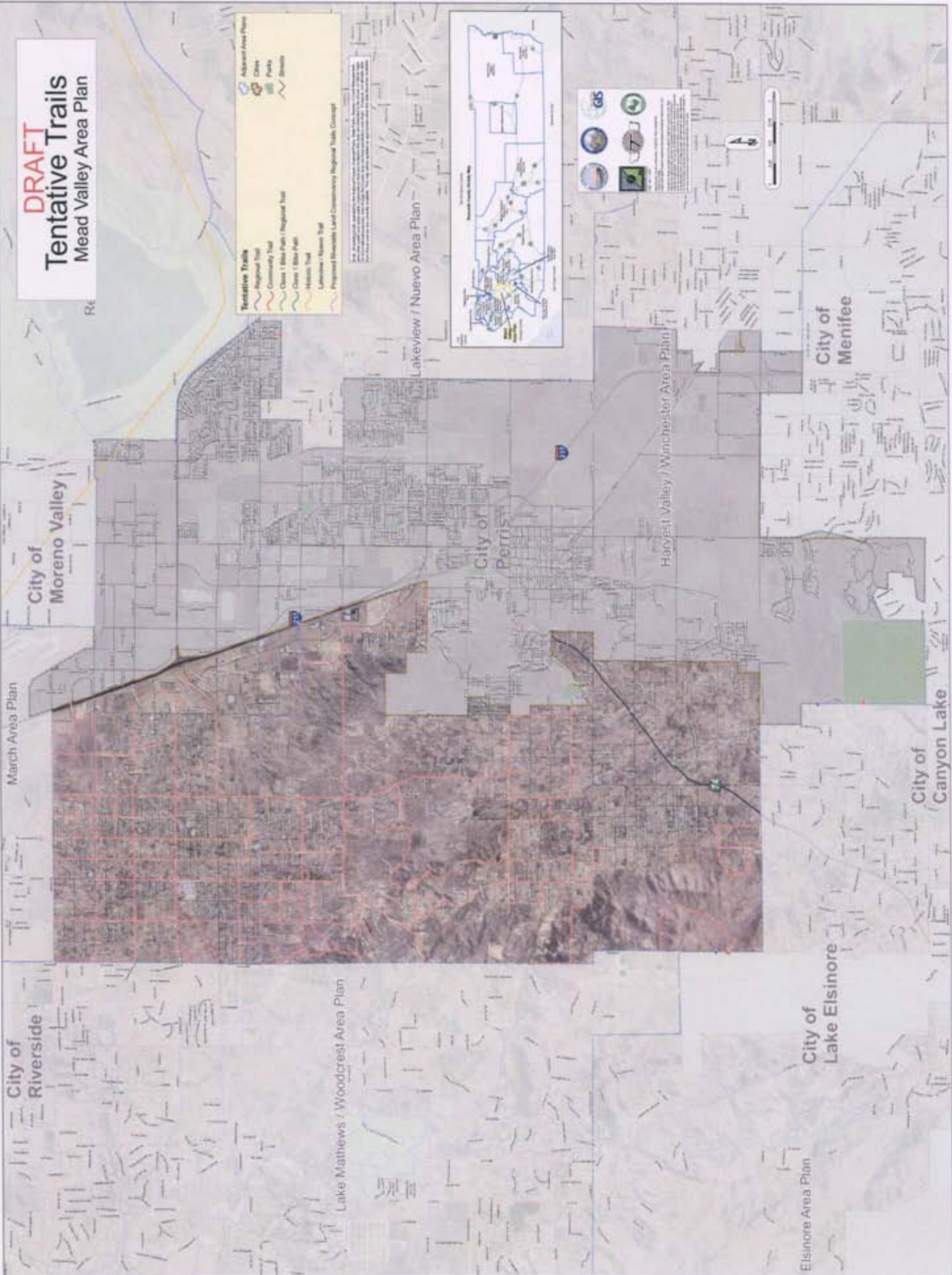


Map scale: 1 inch = 1 mile

North Arrow

Scale bar

Legend for symbols: City, Park, Beach, etc.



**DRAFT**  
**Tentative Trails**  
 Sun City/Menifee Area Plan

Harvest Valley / Winchester Area Plan

Southwest Area Plan

City of Murrieta

City of Menifee

City of Perris

Mead Valley Area Plan

City of Canyon Lake

City of Lake Elsinore

City of Wildomar

Elsinore Area Plan

**Tentative Trails**

- Proposed Trail
- Community Trail
- Class 1 Bike Path
- Class 1 Bike Path
- Historic Trail
- Open Space Trail

**Adjacent Area Plans**

- City of Perris
- City of Canyon Lake
- City of Lake Elsinore
- City of Wildomar
- City of Menifee
- City of Murrieta
- Harvest Valley / Winchester Area Plan
- Mead Valley Area Plan
- Southwest Area Plan



GIS



**DRAFT**  
**Tentative Trails**  
 Southwest Area Plan



San Jacinto Valley Area Plan  
 Harvest Valley / Winchester Area Plan  
 REMAP Area Plan

San Jacinto Valley Area Plan

City of Canyon Lake

City of Wildomar

City of Menifee

City of Murrieta

City of Temecula

City of Hemet

City of Winchester

City of Murrieta

City of Temecula

City of Hemet

City of Winchester

City of Murrieta

City of Temecula

City of Hemet

City of Winchester

City of Murrieta

City of Temecula

City of Hemet

City of Winchester

City of Murrieta

City of Temecula

City of Hemet

City of Winchester

City of Murrieta

City of Temecula

City of Hemet

City of Winchester

City of Murrieta

City of Temecula

City of Hemet

City of Winchester

City of Murrieta

City of Temecula

City of Hemet

City of Winchester

- Tentative Trails**
- Regional Trail
  - Community Trail
  - Class 1 Bike Path (Regional Trail)
  - Class 1 Bike Path
  - Class 2 Bike Path
  - Historic Trail
  - National Forest Or Park / BLM Trail
  - State Route / Private Walking Trail
  - State Route & Trail Access: Private Home Trail
  - Single Purpose Multi-Use Trail
  - RMHC Trail
  - Open Space Trail
  - Adapted Area Plans
  - Cities
  - Parks
  - Streams



San Diego County

San Bernardino County

# DRAFT Tentative Trails Reche Canyon-Badlands Area Plan

The Pass Area Plan

Highgrove  
Area Plan

City of  
Riverside

City of  
Moreno Valley

City of  
Beaumont

San Jacinto  
Valley  
Area Plan

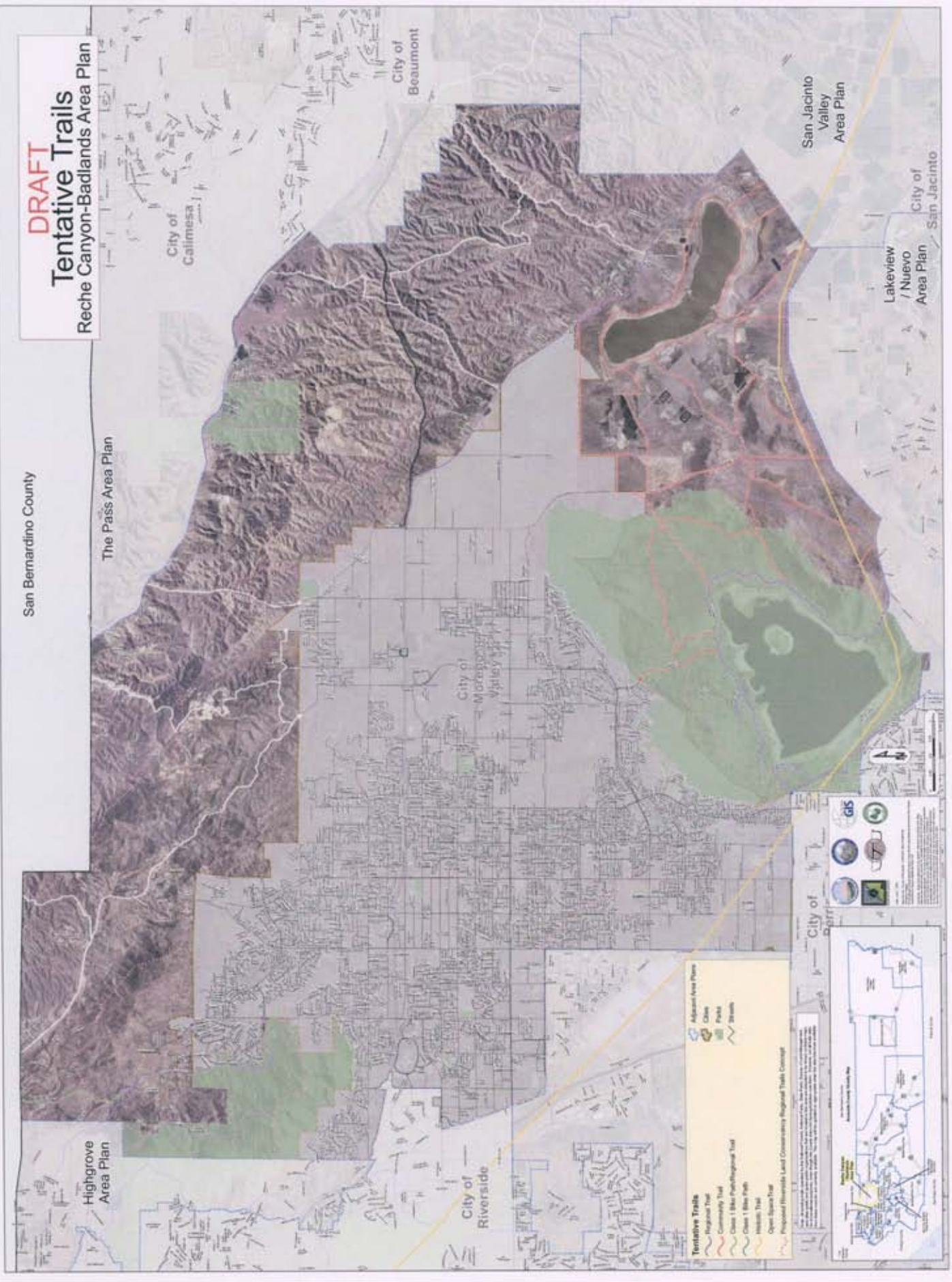
Lakeview  
/ Nuevo  
Area Plan

City of  
San Jacinto

City of  
Berr...

GIS  
ArcGIS  
Other logos

- Tentative Trails**
  - Regional Trail
  - Community Trail
  - Class 1 Blue Path/Regional Trail
  - Class 1 Blue Path
  - Interim Trail
  - Open Space Trail
  - Proposed Riverside Land Conservancy Regional Trails Concept**
- Adjacent Area Plans**
- City
  - Park
  - Stream



# DRAFT Tentative Trails Lakeview/Nuevo Area Plan

- Tentative Trails**
- Regional Trail
  - Community Trail
  - Hamlet Trail
  - Lakeview / Nuevo Trail
  - Open Space Trail
  - Proposed Riverside Land Conservancy Regional Trail Overlay
- Adjacent Area Plans**
- City of San Jacinto
  - City of Hemet
  - City of Menifee
  - City of Perris

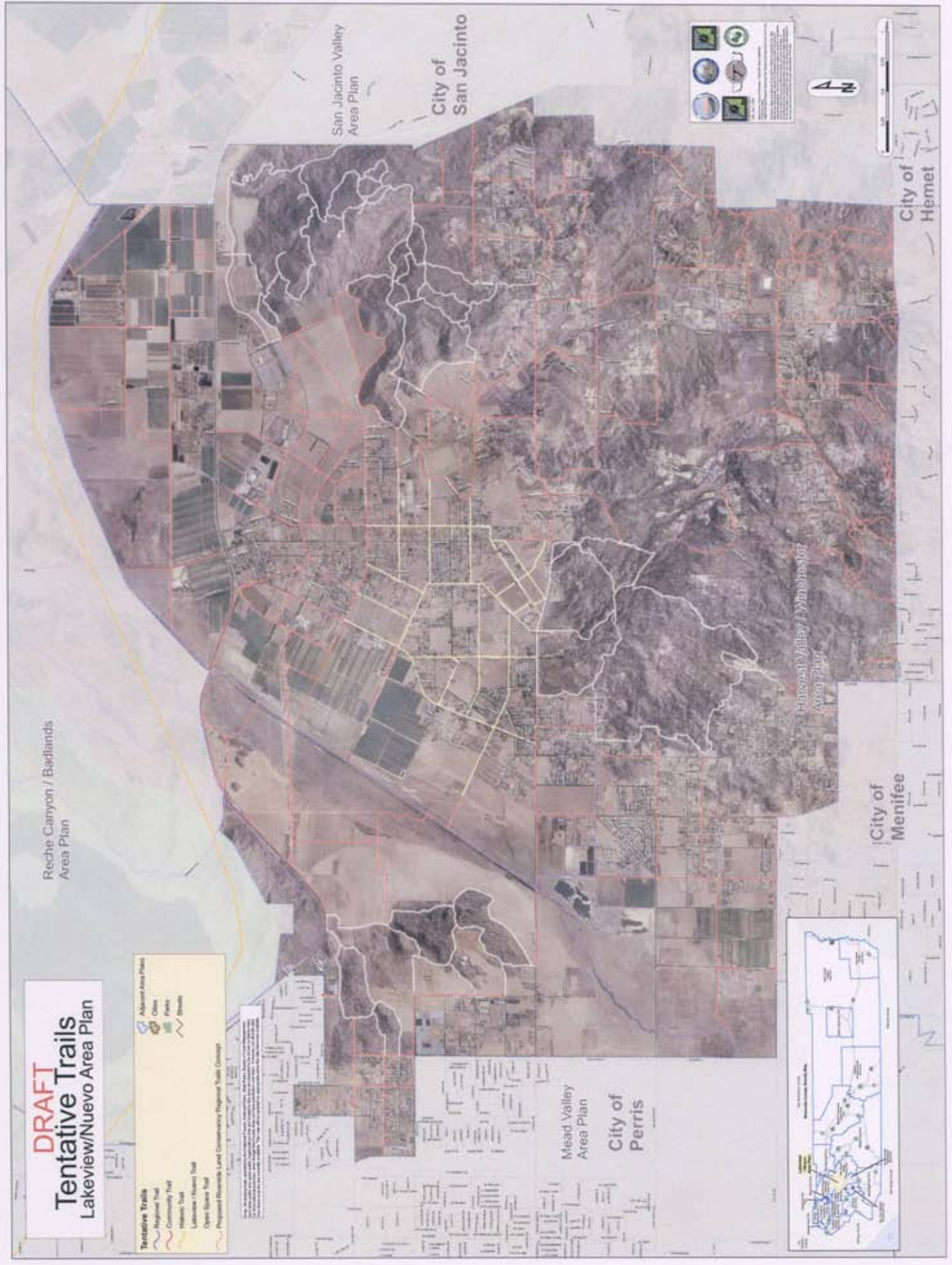
**Legend**

City of San Jacinto

City of Hemet

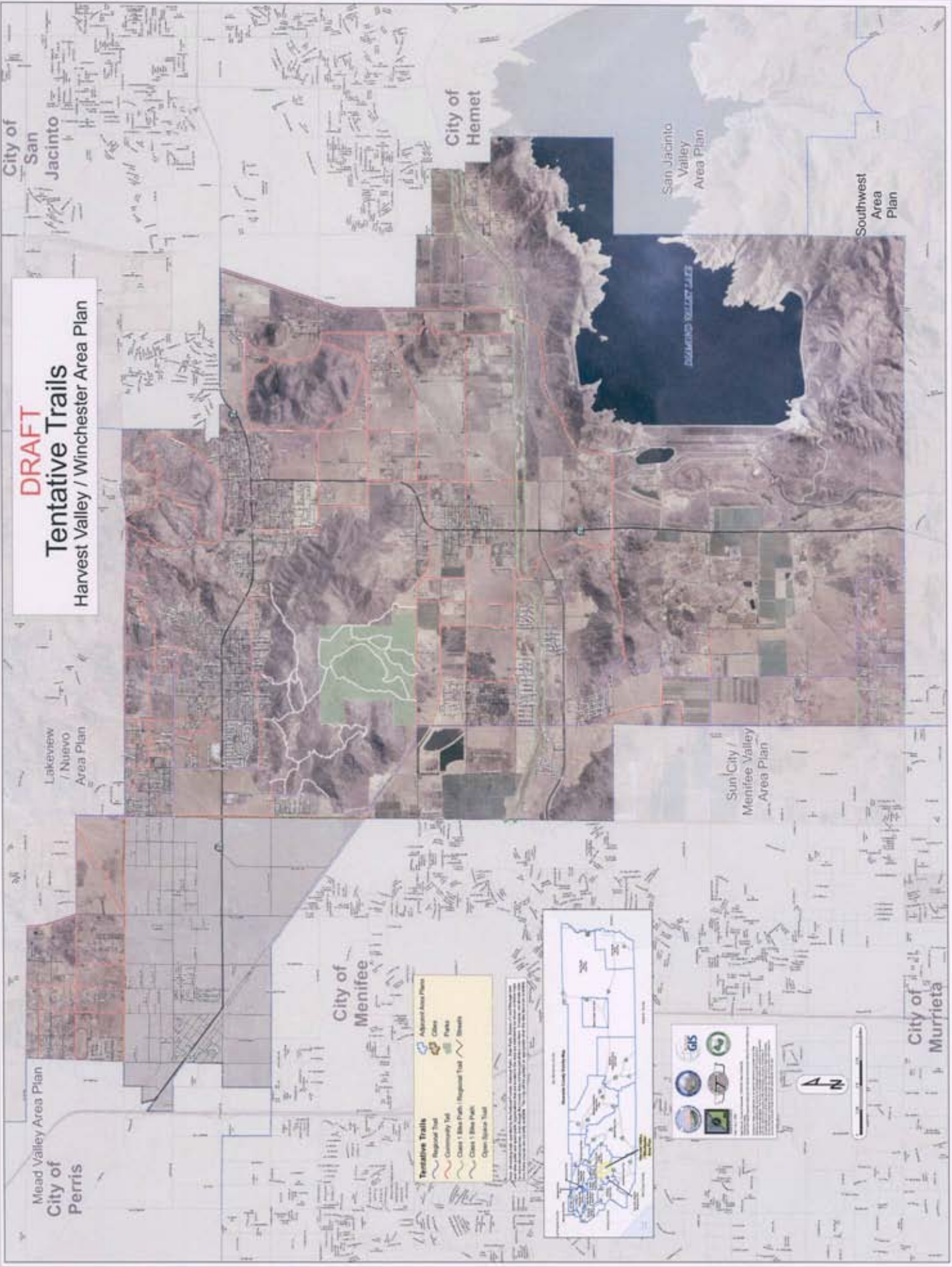
City of Menifee

City of Perris





**DRAFT**  
**Tentative Trails**  
 Harvest Valley / Winchester Area Plan



- Tentative Trails**
- Response Trail
  - Community Trail
  - Class 1 Bike Path / Regional Trail
  - Class 1 Bike Path
  - Open-Source Trail
- Advanced Area Plans**
- Cities
  - Parks
  - Resorts



GIS

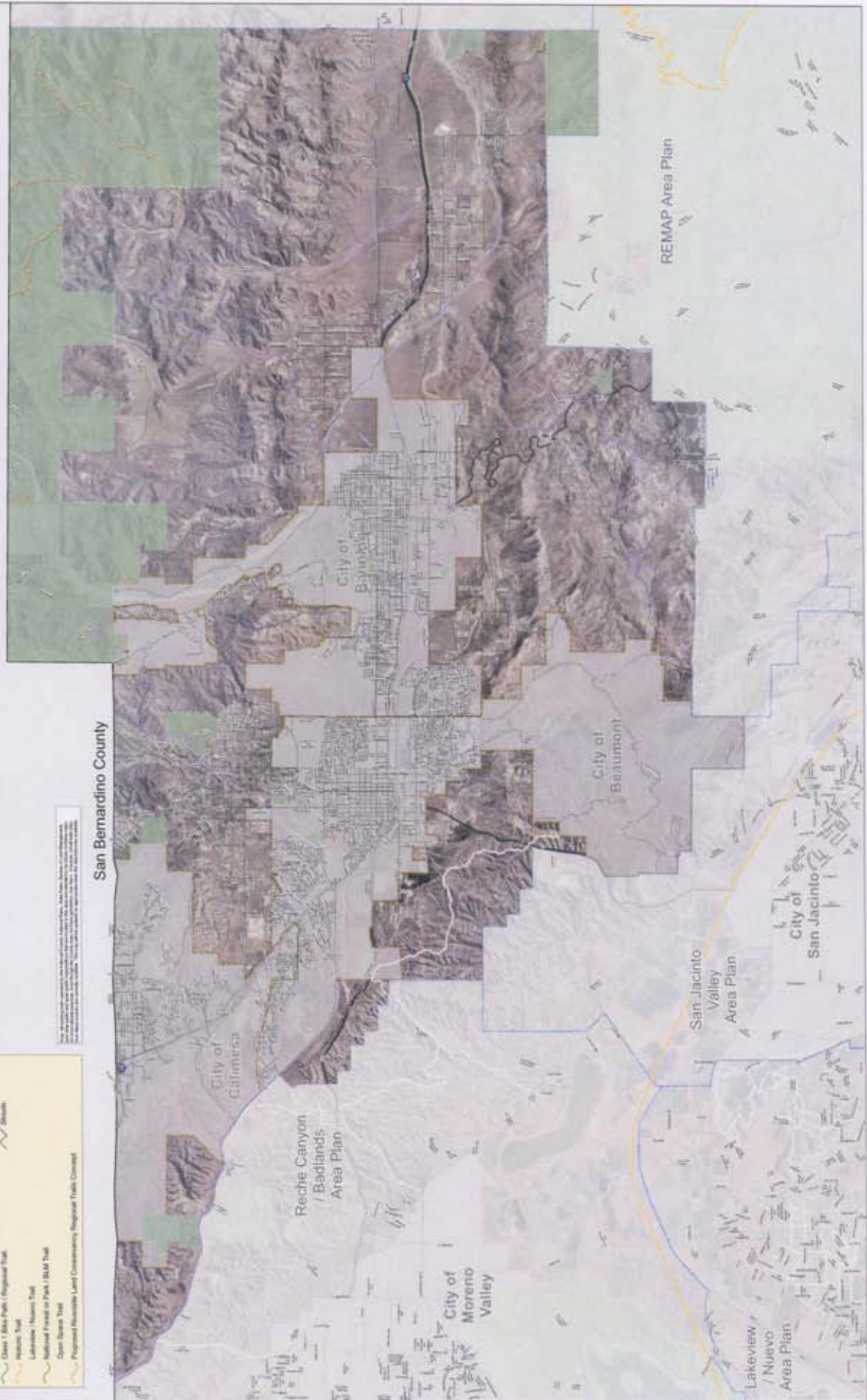
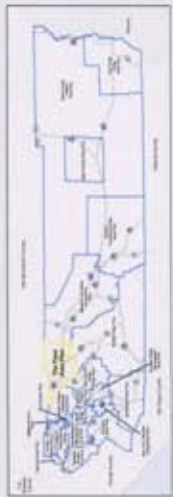


City of Murrieta

# DRAFT Tentative Trails The Pass Area Plan

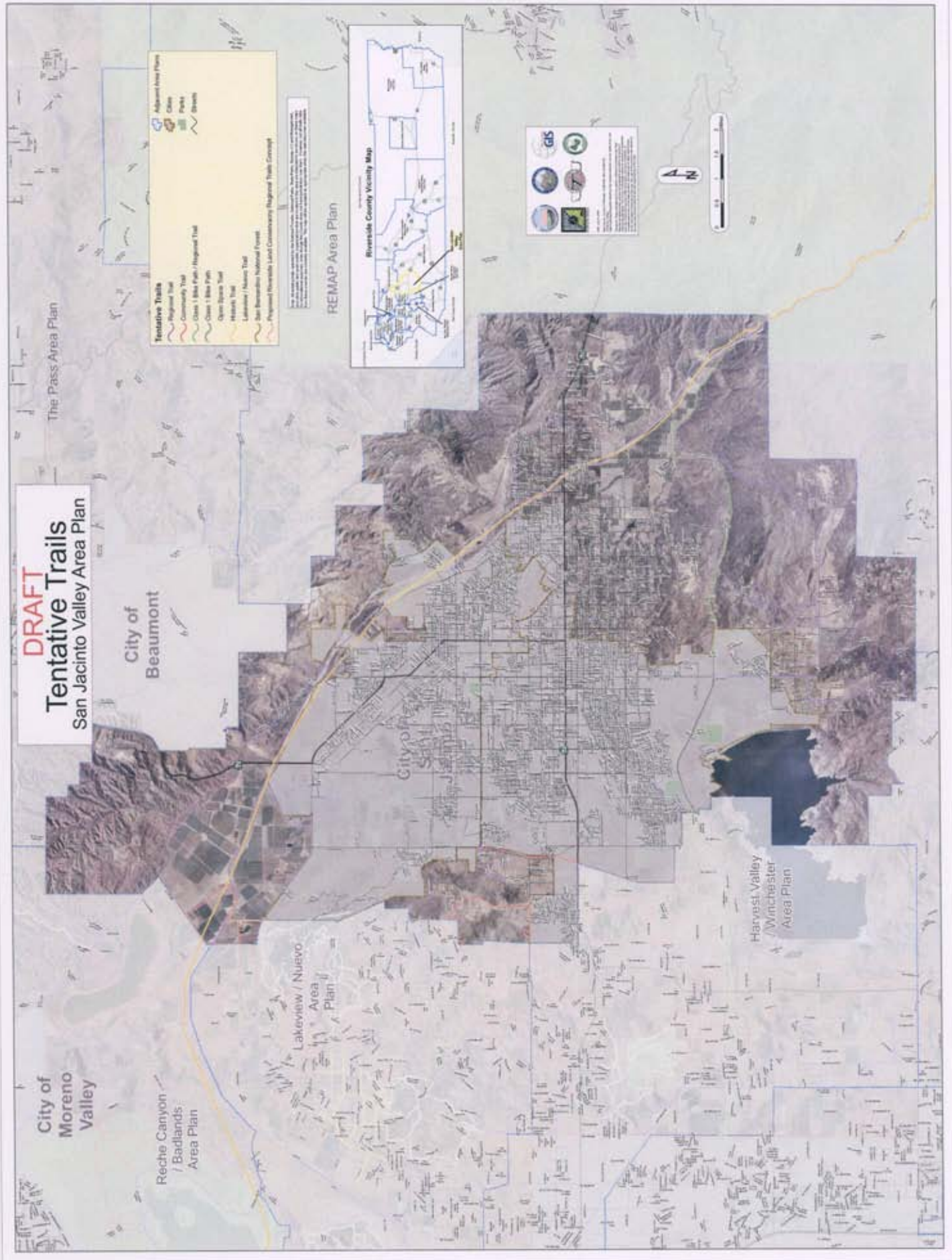
- Tentative Trails
- Regional Trail
- Community Trail
- Class 1 Bike Path / Regional Trail
- Historic Trail
- Levee / Historic Trail
- National Forest or Park / BLM Trail
- Open Space Trail
- Proposed Recreable Land Designatory Regional Trail Overlay

- Adjacent Area Plans
- Cities
- Parks
- Streets



San Bernardino County

# DRAFT Tentative Trails San Jacinto Valley Area Plan



# DRAFT Tentative Trails REMAP Area Plan

**Tentative Trails**

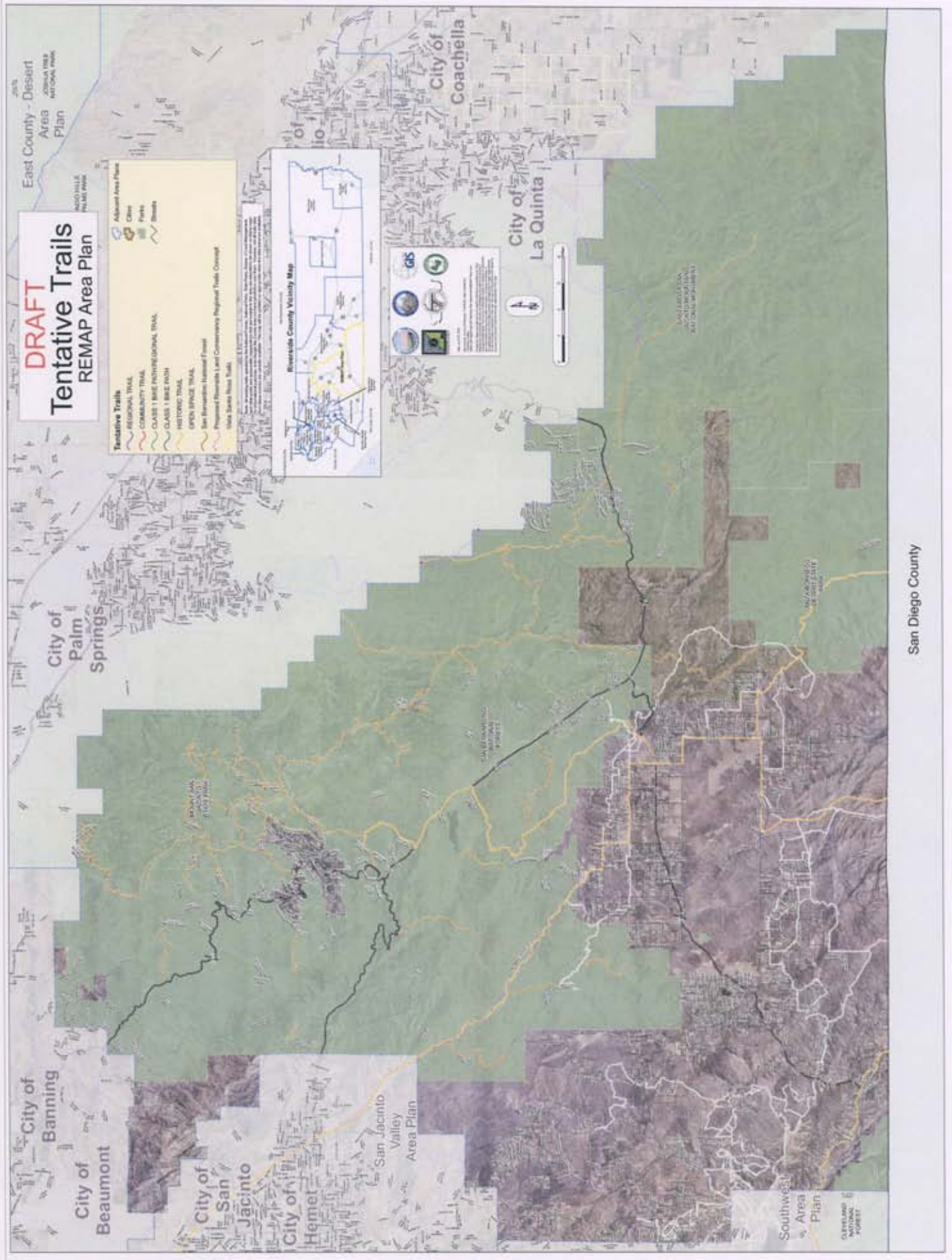
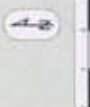
- REGIONAL TRAIL
- COMMUNITY TRAIL
- CLASS 1 BIKER/INDEPENDENT TRAIL
- CLASS 1 BIKER PATH
- HISTORIC TRAIL
- OPEN SPACE TRAIL
- San Francisco Historical Trail
- Proposed Riverside Land Conservancy Regional Trail Concept
- Wild Space Open Trail

**Advanced Area Plans**

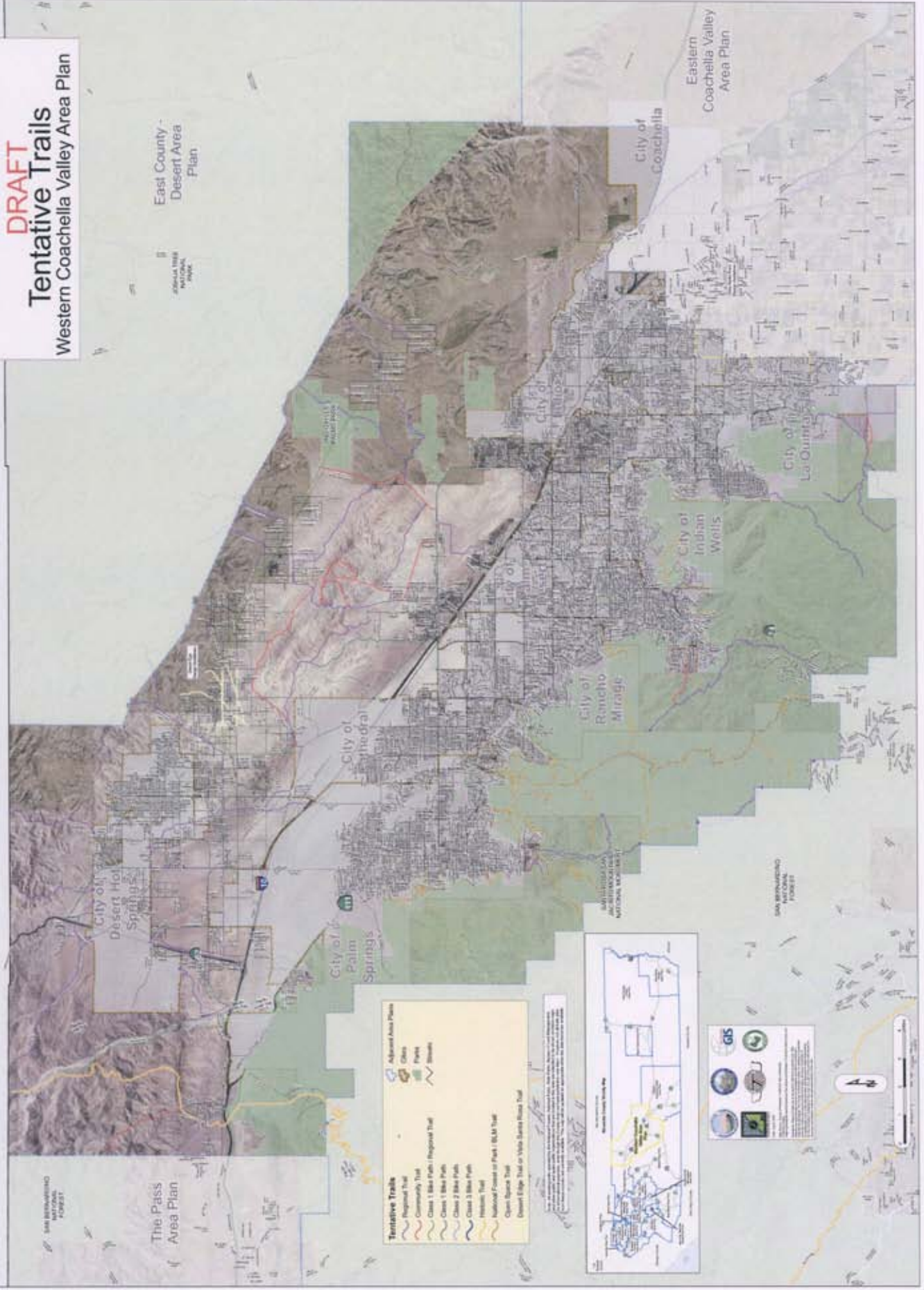
- Cities
- Parks
- Beaches



GIS



# DRAFT Tentative Trails Western Coachella Valley Area Plan



East County - Desert Area Plan

Eastern Coachella Valley Area Plan

SAN BERNARDINO NATIONAL FOREST

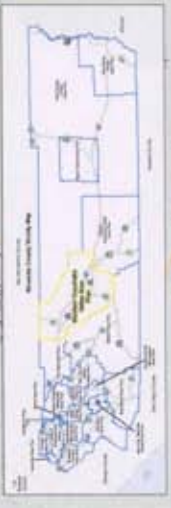
The Pass Area Plan

**Tentative Trails**

- Regional Trail
- Community Trail
- Class 1 Bike Path / Regional Trail
- Class 1 Bike Path
- Class 2 Bike Path
- Class 3 Bike Path
- Hiking Trail
- Individual Forest or Park / BLM Trail
- Open Space Trail
- Desert Edge Trail or Vada Barona Road Trail

**Adjacent Area Plans**

- City of Palm Springs
- City of Cathedral City
- City of Rancho Mirage
- City of Indian Wells
- City of La Quinta
- City of Coachella
- East County - Desert Area Plan
- Eastern Coachella Valley Area Plan



Logos for GIS, San Bernardino National Forest, and other participating organizations.

Scale bar and north arrow.



**DRAFT**  
**TENTATIVE TRAILS**  
**EAST COUNTY - DESERT**  
**AND DESERT CENTER**  
**AREA PLANS**

San Bernardino County



Imperial County

**Tentative Trails**

- Regional Trail
- Community Trail
- Class 1 Bike Path / Regional Trail
- Class 1 Bike Path
- Class 2 Bike Path
- Class 3 Bike Path
- Hiking Trail
- National Forest or Park (BLM) Trail
- Desert Edge Trail or Valley Verde Route Trail

**Adjacent Area Plans**

- Class
- Park
- Stream



GIS



This map was prepared using GIS data provided by the following agencies: San Bernardino County, San Diego County, Imperial County, and the U.S. Department of the Interior, Bureau of Land Management. The map is for informational purposes only and does not constitute a contract or warranty of any kind. The map is subject to change without notice.

San Diego County

**DRAFT**  
**Tentative Trails**  
 PALO VERDE  
 VALLEY AREA PLAN

**TRAIL CATEGORIES**

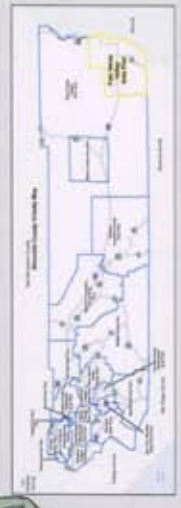
- Adjacent Area Plans
- Class
- Parks
- Streams
- Historic Trail

**Tentative Trails**

- Regional Trail
- Class 1 Silver Path
- Historic Trail

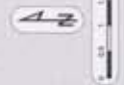
Map of the Palo Verde Valley Area Plan showing the tentative trails network. The map includes the City of Blythe, Imperial County, and the East County - Desert Area Plan. The tentative trails network is shown in yellow and blue lines, connecting various areas and landmarks. The map also shows the location of the Palo Verde Valley Area Plan within the larger context of the Palo Verde Valley.

Arizona



**GIS**

Logos for GIS, ArcGIS, and other mapping-related services.



East County - Desert  
 Area  
 Plan

City of  
 Blythe

Imperial County





